

ARG56201
anti-basic Cytokeratin antibody [SPM591]Package: 50 µg
Store at: -20°C

Summary

| | |
|---------------------|--|
| Product Description | Mouse Monoclonal antibody [SPM591] recognizes basic Cytokeratin |
| Tested Reactivity | Hu |
| Tested Application | IHC-P |
| Host | Mouse |
| Clonality | Monoclonal |
| Clone | SPM591 |
| Isotype | IgG1, kappa |
| Target Name | basic Cytokeratin |
| Species | Human |
| Immunogen | Solubilized keratin extract from human stratum corneum. |
| Conjugation | Un-conjugated |
| Alternate Names | Keratin-76; KRT2P; CK-2P; Keratin, type II cytoskeletal 2 oral; Type-II keratin Kb9; HUMCYT2A; Cytokeratin-2P; K76; KRT2B; K2P |

Application Instructions

| | | |
|-------------------|---|-------------|
| Application table | Application | Dilution |
| | IHC-P | 1 - 2 µg/ml |
| Application Note | IHC-P: Antigen Retrieval: Boil tissue section in 10 mM Citrate buffer (pH 6.0) for 10-20 min, followed by cooling at RT for 20 min. * The dilutions indicate recommended starting dilutions and the optimal dilutions or concentrations should be determined by the scientist. | |

Properties

| | |
|---------------------|--|
| Form | Liquid |
| Purification | Purification with Protein G. |
| Buffer | PBS (pH 7.4), 0.05% Sodium azide and 0.1 mg/ml BSA. |
| Preservative | 0.05% Sodium azide |
| Stabilizer | 0.1 mg/ml BSA |
| Concentration | 0.2 mg/ml |
| Storage instruction | For continuous use, store undiluted antibody at 2-8°C for up to a week. For long-term storage, aliquot and store at -20°C or below. Storage in frost free freezers is not recommended. Avoid repeated freeze/thaw cycles. Suggest spin the vial prior to opening. The antibody solution should be gently mixed before use. |

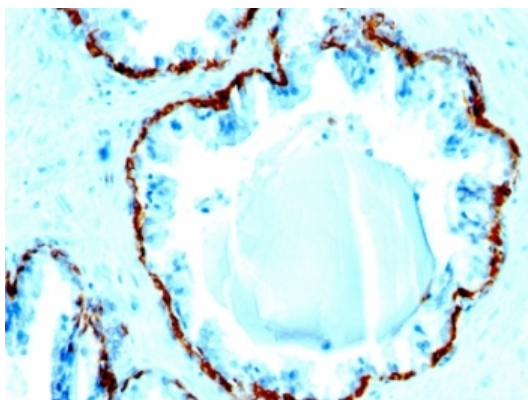
Note

For laboratory research only, not for drug, diagnostic or other use.

Bioinformation

| | |
|-----------------------|--|
| Database links | GeneID: 51350 Human Swiss-port # Q01546 Human |
| Gene Symbol | KRT76 |
| Gene Full Name | keratin 76, type II |
| Background | Keratins are intermediate filament proteins responsible for the structural integrity of epithelial cells and are subdivided into epithelial keratins and hair keratins. The type II keratins are clustered in a region of chromosome 12q13. [provided by RefSeq, Jun 2009] |
| Function | Probably contributes to terminal cornification. [UniProt] |
| Calculated Mw | 66 kDa |
| Cellular Localization | Cytoplasmic |

Images



ARG56201 anti-basic Cytokeratin antibody [SPM591] IHC-P image

Immunohistochemistry: Formalin-fixed and paraffin-embedded Human prostate carcinoma stained with ARG56201 anti-basic Cytokeratin antibody [SPM591].