

ARG56170 anti-CRHR2 / CRF-R2 antibody

Package: 50 µg
Store at: -20°C

Summary

Product Description	Rabbit Polyclonal antibody recognizes CRHR2 / CRF-R2
Tested Reactivity	Hu, Ms, Rat
Tested Application	WB
Host	Rabbit
Clonality	Polyclonal
Isotype	IgG
Target Name	CRHR2 / CRF-R2
Species	Human
Immunogen	A recombinant protein fragment from the N-terminal portion of human CRHR2 / CRF-R2.
Conjugation	Un-conjugated
Alternate Names	Corticotropin-releasing hormone receptor 2; HM-CRF; CRFR-2; CRF-R2; CRF-R-2; CRH-R-2; Corticotropin-releasing factor receptor 2; CRFR2; CRF2; CRH-R2; CRF-RB

Application Instructions

Application table	Application	Dilution
	WB	0.5 - 2 µg/ml
Application Note	* The dilutions indicate recommended starting dilutions and the optimal dilutions or concentrations should be determined by the scientist.	

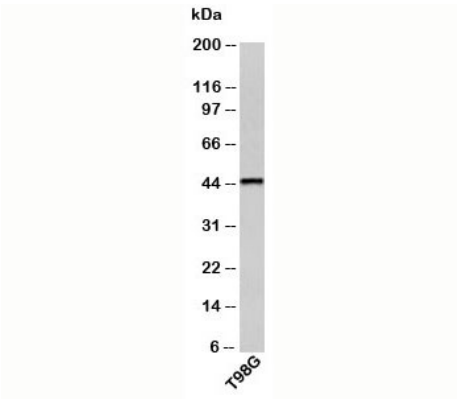
Properties

Form	Liquid
Purification	Purification with Protein A.
Buffer	PBS (pH 7.4), 0.05% Sodium azide and 0.1 mg/ml BSA.
Preservative	0.05% Sodium azide
Stabilizer	0.1 mg/ml BSA
Concentration	0.5 mg/ml
Storage instruction	For continuous use, store undiluted antibody at 2-8°C for up to a week. For long-term storage, aliquot and store at -20°C or below. Storage in frost free freezers is not recommended. Avoid repeated freeze/thaw cycles. Suggest spin the vial prior to opening. The antibody solution should be gently mixed before use.
Note	For laboratory research only, not for drug, diagnostic or other use.

Bioinformation

Gene Symbol	CRHR2
Gene Full Name	corticotropin releasing hormone receptor 2
Background	The protein encoded by this gene belongs to the G-protein coupled receptor 2 family, and the subfamily of corticotropin releasing hormone receptor. This receptor shows high affinity for corticotropin releasing hormone (CRH), and also binds CRH-related peptides such as urocortin. CRH is synthesized in the hypothalamus, and plays an important role in coordinating the endocrine, autonomic, and behavioral responses to stress and immune challenge. Studies in mice suggest that this receptor maybe involved in mediating cardiovascular homeostasis. Alternatively spliced transcript variants encoding different isoforms have been described for this gene.[provided by RefSeq, Jan 2011]
Function	G-protein coupled receptor for CRH (corticotropin-releasing factor), UCN (urocortin), UCN2 and UCN3. Has high affinity for UCN. Ligand binding causes a conformation change that triggers signaling via guanine nucleotide-binding proteins (G proteins) and down-stream effectors, such as adenylate cyclase. Promotes the activation of adenylate cyclase, leading to increased intracellular cAMP levels. [UniProt]
Calculated Mw	48 kDa
PTM	A N-glycosylation site within the signal peptide impedes its proper cleavage and function.
Cellular Localization	Membrane, Secreted

Images



ARG56170 anti-CRHR2 / CRF-R2 antibody WB image

Western blot: T98G cell lysate stained with ARG56170 anti-CRHR2 / CRF-R2 antibody at 0.5 µg/ml dilution.