

ARG56138 anti-CD163 antibody

Package: 50 µl
Store at: -20°C

Summary

Product Description	Rabbit Polyclonal antibody recognizes CD163
Tested Reactivity	Hu, Ms, Rat
Tested Application	FACS, IHC-P, WB
Host	Rabbit
Clonality	Polyclonal
Target Name	CD163
Antigen Species	Human
Immunogen	KLH-conjugated synthetic peptide from Human CD163.
Conjugation	Un-conjugated
Alternate Names	sCD163; M130; Scavenger receptor cysteine-rich type 1 protein M130; MM130; CD antigen CD163; Hemoglobin scavenger receptor

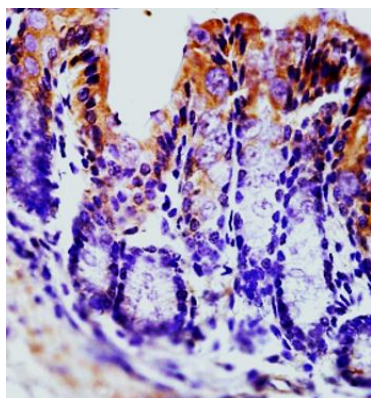
Application Instructions

Application table	Application	Dilution
	FACS	1:20 - 1:100
	IHC-P	1:100 - 1:500
	WB	1:100 - 1:500
Application Note	* The dilutions indicate recommended starting dilutions and the optimal dilutions or concentrations should be determined by the scientist.	
Positive Control	Rat brain	
Calculated Mw	125 kDa	

Properties

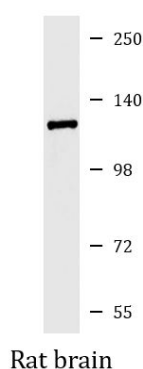
Form	Liquid
Purification	Affinity purification with immunogen.
Buffer	0.01M TBS (pH 7.4), 0.03% Proclin-300, 1% BSA and 50% Glycerol
Preservative	0.03% Proclin-300
Stabilizer	1% BSA and 50% Glycerol
Storage instruction	For continuous use, store undiluted antibody at 2-8°C for up to a week. For long-term storage, aliquot and store at -20°C. Storage in frost free freezers is not recommended. Avoid repeated freeze/thaw cycles. Suggest spin the vial prior to opening. The antibody solution should be gently mixed before use.
Note	For laboratory research only, not for drug, diagnostic or other use.

Database links	GeneID: 9332 Human GeneID: 93671 Mouse Swiss-port # Q2VLH6 Mouse Swiss-port # Q86VB7 Human
Gene Symbol	CD163
Gene Full Name	CD163 molecule
Background	<p>CD163 protein is a member of the scavenger receptor cysteine-rich (SRCR) superfamily, and is exclusively expressed in monocytes and macrophages. It functions as an acute phase-regulated receptor involved in the clearance and endocytosis of hemoglobin/haptoglobin complexes by macrophages, and may thereby protect tissues from free hemoglobin-mediated oxidative damage. This protein may also function as an innate immune sensor for bacteria and inducer of local inflammation. Alternatively spliced transcript variants encoding different isoforms have been described for this gene. [provided by RefSeq, Aug 2011]</p>
Function	<p>CD163: Acute phase-regulated receptor involved in clearance and endocytosis of hemoglobin/haptoglobin complexes by macrophages and may thereby protect tissues from free hemoglobin-mediated oxidative damage. May play a role in the uptake and recycling of iron, via endocytosis of hemoglobin/haptoglobin and subsequent breakdown of heme. Binds hemoglobin/haptoglobin complexes in a calcium-dependent and pH-dependent manner. Exhibits a higher affinity for complexes of hemoglobin and multimeric haptoglobin of HP*1F phenotype than for complexes of hemoglobin and dimeric haptoglobin of HP*1S phenotype. Induces a cascade of intracellular signals that involves tyrosine kinase-dependent calcium mobilization, inositol triphosphate production and secretion of IL6 and CSF1. Isoform 3 exhibits the higher capacity for ligand endocytosis and the more pronounced surface expression when expressed in cells.</p> <p>After shedding, the soluble form (sCD163) may play an anti-inflammatory role, and may be a valuable diagnostic parameter for monitoring macrophage activation in inflammatory conditions. [UniProt]</p>
Highlight	<p>Related products: CD163 antibodies; CD163 ELISA Kits; CD163 Duos / Panels;</p> <p>Related news: New antibody panels and duos for Tumor immune microenvironment Anti-SerpinB9 therapy, a new strategy for cancer therapy</p>
Research Area	M1/M2/TAM Marker antibody; Macrophage Marker antibody; M2 Macrophage Marker antibody
Cellular Localization	Soluble CD163: Secreted.



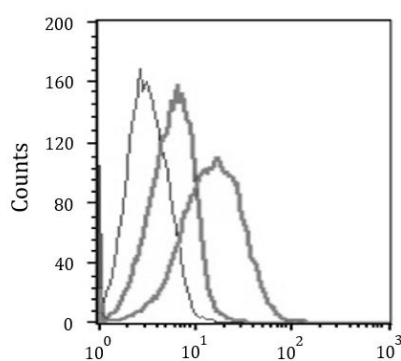
ARG56138 anti-CD163 antibody IHC-P image

Immunohistochemistry: Formalin-fixed and paraffin embedded Mouse intestine stained with ARG56138 anti-CD163 antibody at 1:200 dilution.



ARG56138 anti-CD163 antibody WB image

Western blot: Rat brain lysate stained with ARG56138 anti-CD163 antibody at 1:200 dilution (4°C).



ARG56138 anti-CD163 antibody FACS image

Flow Cytometry: Mouse splenocytes stained with FITC-Conjugated ARG56138 anti-CD163 antibody at 1:10 dilution for 30 min (right histogram). Controls: unstained cells (left histogram) and isotype control (middle histogram).