

ARG56003 anti-CD20 antibody [L26]

Package: 250 µl
Store at: -20°C

Summary

Product Description	Mouse Monoclonal antibody [L26] recognizes CD20
Tested Reactivity	Hu, Bb, Mk
Species Does Not React With	Rat, Cow, Dog, Pig
Tested Application	FACS, ICC/IF, IHC-P, WB
Host	Mouse
Clonality	Monoclonal
Clone	L26
Isotype	IgG2a, kappa
Target Name	CD20
Species	Human
Immunogen	Human tonsil B cells.
Conjugation	Un-conjugated
Alternate Names	Bp35; LEU-16; B-lymphocyte surface antigen B1; B-lymphocyte antigen CD20; CD20; S7; CD antigen CD20; Leukocyte surface antigen Leu-16; B1; CVID5; Membrane-spanning 4-domains subfamily A member 1; MS4A2

Application Instructions

Application table	Application	Dilution
	FACS	5 - 10 µl/10 ⁶ cells
	ICC/IF	1:50 - 1:100
	IHC-P	1:100 - 1:200
	WB	1:50 - 1:100
Application Note	IHC-P: Antigen Retrieval: Boil tissue section in 10mM Citrate buffer (pH 6.0) for 10-20 min followed by cooling at RT for 20 min. * The dilutions indicate recommended starting dilutions and the optimal dilutions or concentrations should be determined by the scientist.	

Properties

Form	Liquid
Buffer	PBS (pH 7.4) and 0.05% Sodium azide
Preservative	0.05% Sodium azide
Storage instruction	For continuous use, store undiluted antibody at 2-8°C for up to a week. For long-term storage, aliquot and store at -20°C or below. Storage in frost free freezers is not recommended. Avoid repeated

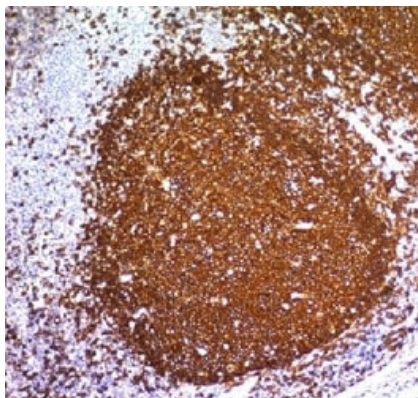
freeze/thaw cycles. Suggest spin the vial prior to opening. The antibody solution should be gently mixed before use.

Note

For laboratory research only, not for drug, diagnostic or other use.

Bioinformation

Database links	GeneID: 931 Human Swiss-port # P11836 Human
Gene Symbol	MS4A1
Gene Full Name	membrane-spanning 4-domains, subfamily A, member 1
Background	CD20 is a member of the membrane-spanning 4A gene family. Members of this nascent protein family are characterized by common structural features and similar intron/exon splice boundaries and display unique expression patterns among hematopoietic cells and nonlymphoid tissues. This gene encodes a B-lymphocyte surface molecule which plays a role in the development and differentiation of B-cells into plasma cells. This family member is localized to 11q12, among a cluster of family members. Alternative splicing of this gene results in two transcript variants which encode the same protein. [provided by RefSeq, Jul 2008]
Function	CD20 is a B-lymphocyte-specific membrane protein. It plays a role in the regulation of cellular calcium influx necessary for the development, differentiation, and activation of B-lymphocytes (PubMed:3925015, PubMed:7684739, PubMed:12920111). Functions as a store-operated calcium (SOC) channel component promoting calcium influx after activation by the B-cell receptor/BCR (PubMed:7684739, PubMed:12920111, PubMed:18474602). [UniProt]
Highlight	Related products: CD20 antibodies ; CD20 ELISA Kits ; CD20 Duos / Panels ; Anti-Mouse IgG secondary antibodies ; Related news: Tumor-Infiltrating Lymphocytes (TILs) New antibody panels and duos for Tumor immune microenvironment Exploring Antiviral Immune Response
Research Area	Cancer antibody; Developmental Biology antibody; Immune System antibody; B cell Marker antibody; Immature B Cell Marker antibody; Inflammatory Cell Marker antibody; Tumor-infiltrating Lymphocyte Study antibody
Calculated Mw	33 kDa
PTM	Phosphorylated. Might be functionally regulated by protein kinase(s).
Cellular Localization	Predominantly cell surface with some cytoplasmic



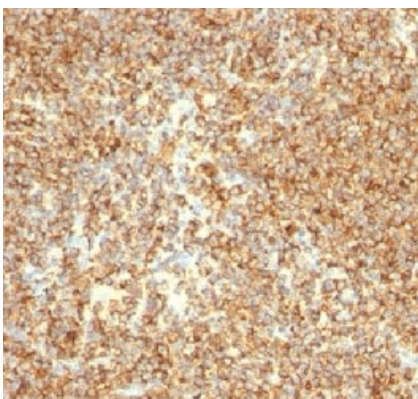
ARG56003 anti-CD20 antibody [L26] IHC-P image

Immunohistochemistry: Formalin-fixed, paraffin-embedded Human tonsil tissue stained with ARG56003 anti-CD20 antibody [L26].



ARG56003 anti-CD20 antibody [L26] WB image

Western blot: Ramos cell lysate stained with ARG56003 anti-CD20 antibody [L26].



ARG56003 anti-CD20 antibody [L26] IHC-P image

Immunohistochemistry: Human lymphoma tissue stained with ARG56003 anti-CD20 antibody [L26].
