

ARG55958 Mouse anti-Kappa Light Chain (constant) antibody [L1C1]

Package: 50 µg
Store at: -20°C

Summary

Product Description	Mouse Monoclonal antibody [L1C1] recognizes Kappa Light Chain (constant)
Tested Reactivity	Hu
Species Does Not React With	Rat
Tested Application	IHC-P, WB
Host	Mouse
Clonality	Monoclonal
Clone	L1C1
Isotype	IgG1, kappa
Target Name	Kappa Light Chain (constant)
Species	Human
Immunogen	Human B-Lymphoma Cells.
Conjugation	Un-conjugated
Alternate Names	Ig kappa chain

Application Instructions

Application table	Application	Dilution
	IHC-P	2 - 5 µg/ml
	WB	1 - 2 µg/ml
Application Note	<p>IHC-P: Antigen Retrieval: Boil tissue section in 10 mM Citrate buffer (pH 6.0) for 10-20 min, followed by cooling at RT for 20 min.</p> <p>* The dilutions indicate recommended starting dilutions and the optimal dilutions or concentrations should be determined by the scientist.</p>	

Properties

Form	Liquid
Purification	Purification with Protein G.
Buffer	PBS (pH 7.4), 0.05% Sodium azide and 0.1 mg/ml BSA
Preservative	0.05% Sodium azide
Stabilizer	0.1 mg/ml BSA
Concentration	0.2 mg/ml
Storage instruction	For continuous use, store undiluted antibody at 2-8°C for up to a week. For long-term storage, aliquot and store at -20°C or below. Storage in frost free freezers is not recommended. Avoid repeated freeze/thaw cycles. Suggest spin the vial prior to opening. The antibody solution should be gently mixed

before use.

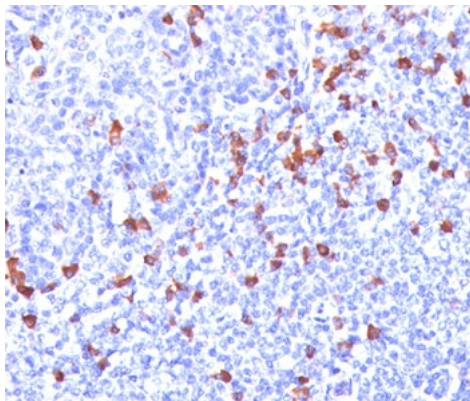
Note

For laboratory research only, not for drug, diagnostic or other use.

Bioinformation

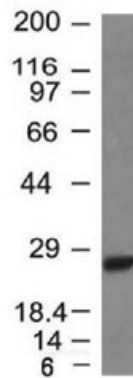
Database links	GeneID: 3514 Human
Gene Full Name	Immunoglobulin kappa
Calculated Mw	12 kDa
Cellular Localization	Cell surface, cytoplasmic and secreted

Images



ARG55958 Mouse anti-Kappa Light Chain (constant) antibody [L1C1]
IHC-P image

Immunohistochemistry: Formalin-fixed, paraffin-embedded Human tonsil stained with ARG55958 Mouse anti-Kappa Light Chain (constant) antibody [L1C1]. Note cell membrane and cytoplasmic staining.



ARG55958 Mouse anti-Kappa Light Chain (constant) antibody [L1C1]
WB image

Western blot: Raji cell lysate stained with ARG55958 Mouse anti-Kappa Light Chain (constant) antibody [L1C1].