

## ARG55925 anti-SCF antibody

Package: 100 µg  
Store at: -20°C

### Summary

Product Description	Rabbit Polyclonal antibody recognizes SCF
Tested Reactivity	Hu
Tested Application	ELISA, IHC-P, Neut, WB
Host	Rabbit
Clonality	Polyclonal
Isotype	IgG
Target Name	SCF
Species	Human
Immunogen	Recombinant Human SCF
Conjugation	Un-conjugated
Alternate Names	SCF; SHEP7; MGF; FPHH; sKITLG; Stem cell factor; KL-1; Kitl; Kit ligand; Mast cell growth factor; c-Kit ligand; FPH2; SF

### Application Instructions

Application table	Application	Dilution
	ELISA	0.5 - 2.0 µg/ml
	IHC-P	0.5 - 1.0 µg/ml
	Neut	0.64 - 0.96 µg/ml (To yield [ND50] of the biological activity of hSCF (10 ng/ml))
	WB	0.1 - 0.2 µg/ml
Application Note	IHC-P: enzyme induced antigen retrieval (proteinase K) at room temperature. * The dilutions indicate recommended starting dilutions and the optimal dilutions or concentrations should be determined by the scientist.	

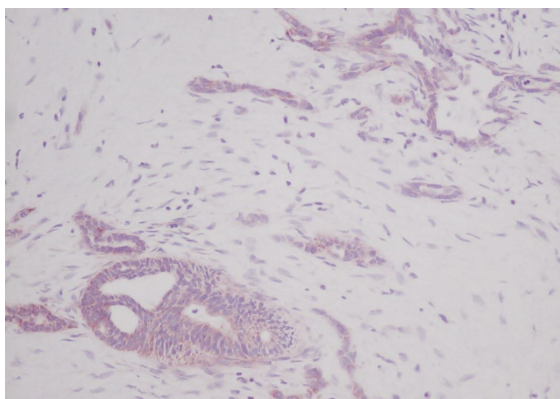
### Properties

Form	Liquid
Purification	Affinity purification with immunogen.
Buffer	PBS (pH 7.2)
Concentration	1 mg/ml
Storage instruction	For continuous use, store undiluted antibody at 2-8°C for up to a week. For long-term storage, aliquot and store at -20°C. Storage in frost free freezers is not recommended. Avoid repeated freeze/thaw cycles. Suggest spin the vial prior to opening. The antibody solution should be gently mixed before use.
Note	For laboratory research only, not for drug, diagnostic or other use.

## Bioinformation

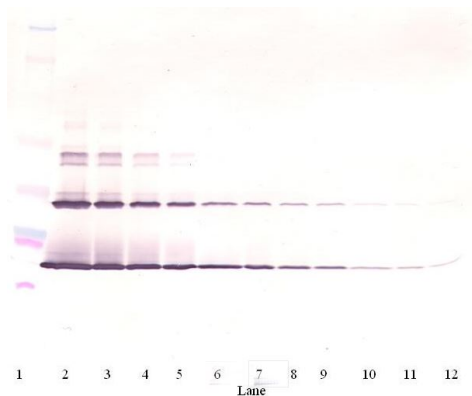
Database links	<a href="#">GeneID: 4254 Human</a> <a href="#">Swiss-port # P21583 Human</a>
Gene Symbol	KITLG
Gene Full Name	KIT ligand
Background	This gene encodes the ligand of the tyrosine-kinase receptor encoded by the KIT locus. This ligand is a pleiotropic factor that acts in utero in germ cell and neural cell development, and hematopoiesis, all believed to reflect a role in cell migration. In adults, it functions pleiotropically, while mostly noted for its continued requirement in hematopoiesis. Two transcript variants encoding different isoforms have been found for this gene. [provided by RefSeq, Jul 2008]
Function	Ligand for the receptor-type protein-tyrosine kinase KIT. Plays an essential role in the regulation of cell survival and proliferation, hematopoiesis, stem cell maintenance, gametogenesis, mast cell development, migration and function, and in melanogenesis. KITLG/SCF binding can activate several signaling pathways. Promotes phosphorylation of PIK3R1, the regulatory subunit of phosphatidylinositol 3-kinase, and subsequent activation of the kinase AKT1. KITLG/SCF and KIT also transmit signals via GRB2 and activation of RAS, RAF1 and the MAP kinases MAPK1/ERK2 and/or MAPK3/ERK1. KITLG/SCF and KIT promote activation of STAT family members STAT1, STAT3 and STAT5. KITLG/SCF and KIT promote activation of PLCG1, leading to the production of the cellular signaling molecules diacylglycerol and inositol 1,4,5-trisphosphate. KITLG/SCF acts synergistically with other cytokines, probably interleukins. [UniProt]
Calculated Mw	31 kDa
PTM	A soluble form (sKITLG) is produced by proteolytic processing of isoform 1 in the extracellular domain. Found in two differentially glycosylated forms, LMW-SCF and HMW-SCF. LMW-SCF is fully N-glycosylated at Asn-145, partially N-glycosylated at Asn-90, O-glycosylated at Ser-167, Thr-168 and Thr-180, and not glycosylated at Asn-97 or Asn-118. HMW-SCF is N-glycosylated at Asn-118, Asn-90 and Asn-145, O-glycosylated at Ser-167, Thr-168 and Thr-180, and not glycosylated at Asn-97. A soluble form exists as a cleavage product of the extracellular domain.

## Images



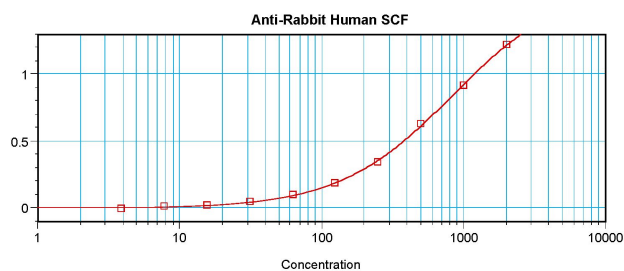
ARG55925 anti-SCF antibody IHC-P image

Immunohistochemistry: formalin-fixed paraffin-embedded sections of Human pancreas adenocarcinoma tissue stained with ARG55925 anti-SCF antibody.



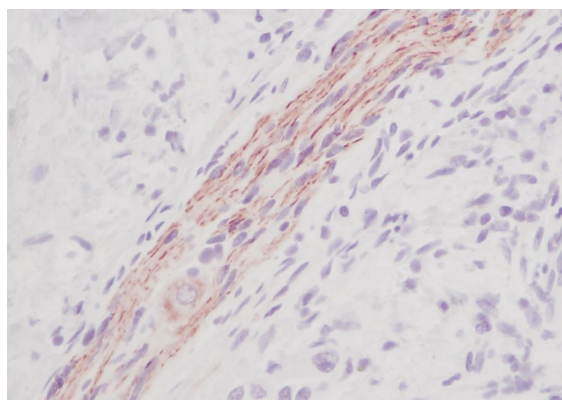
ARG55925 anti-SCF antibody WB image

Western blot: 250 - 0.24 ng (left to right) of recombinant Human SCF stained with ARG55925 anti-SCF antibody at non-reducing condition.



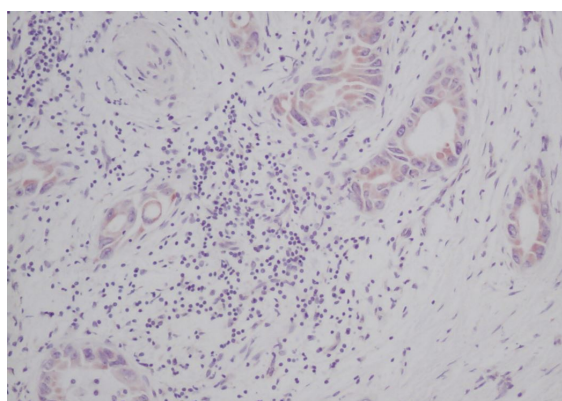
ARG55925 anti-SCF antibody standard curve image

ARG55925 anti-SCF antibody results of a typical standard run with optical density reading at Mean value.



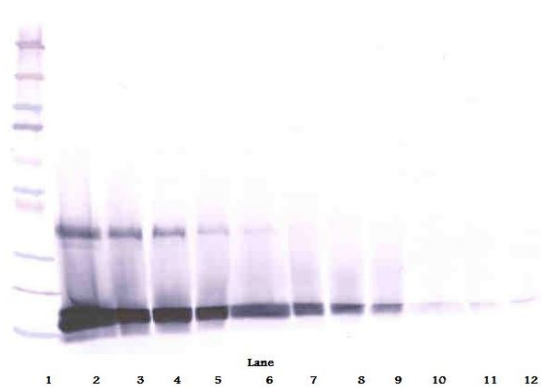
ARG55925 anti-SCF antibody IHC-P image

Immunohistochemistry: formalin-fixed paraffin-embedded sections of Human pancreas adenocarcinoma tissue stained with ARG55925 anti-SCF antibody.



ARG55925 anti-SCF antibody IHC-P image

Immunohistochemistry: formalin-fixed paraffin-embedded sections of Human pancreas adenocarcinoma tissue stained with ARG55925 anti-SCF antibody.



#### ARG55925 anti-SCF antibody WB image

Western blot: 250 - 0.24 ng (left to right) of recombinant Human SCF stained with ARG55925 anti-SCF antibody at reducing condition.