

ARG55918 anti-RPL3 antibody

Package: 100 µl
Store at: -20°C

Summary

Product Description	Rabbit Polyclonal antibody recognizes RPL3
Tested Reactivity	Hu
Predict Reactivity	Ms, Rat, Bov, Mk, Pig, Yeast
Tested Application	IHC-P, WB
Host	Rabbit
Clonality	Polyclonal
Isotype	IgG
Target Name	RPL3
Species	Human
Immunogen	KLH-conjugated synthetic peptide corresponding to aa. 224-251 (Center) of Human RPL3.
Conjugation	Un-conjugated
Alternate Names	ASC-1; 60S ribosomal protein L3; HIV-1 TAR RNA-binding protein B; L3; TARBP-B

Application Instructions

Application table	Application	Dilution
	IHC-P	1:10 - 1:50
	WB	1:1000
Application Note	* The dilutions indicate recommended starting dilutions and the optimal dilutions or concentrations should be determined by the scientist.	
Positive Control	MDA-MB-435	

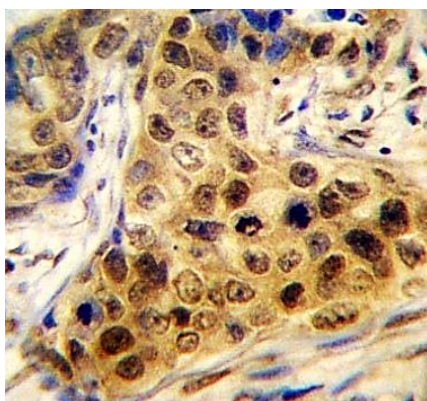
Properties

Form	Liquid
Purification	Purification with Protein A and immunogen peptide.
Buffer	PBS and 0.09% (W/V) Sodium azide.
Preservative	0.09% (W/V) Sodium azide.
Storage instruction	For continuous use, store undiluted antibody at 2-8°C for up to a week. For long-term storage, aliquot and store at -20°C or below. Storage in frost free freezers is not recommended. Avoid repeated freeze/thaw cycles. Suggest spin the vial prior to opening. The antibody solution should be gently mixed before use.
Note	For laboratory research only, not for drug, diagnostic or other use.

Bioinformation

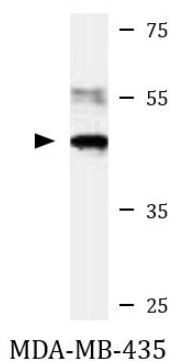
Database links	GeneID: 6122 Human Swiss-port # P39023 Human
Gene Symbol	RPL3
Gene Full Name	ribosomal protein L3
Background	Ribosomes, the complexes that catalyze protein synthesis, consist of a small 40S subunit and a large 60S subunit. Together these subunits are composed of 4 RNA species and approximately 80 structurally distinct proteins. This gene encodes a ribosomal protein that is a component of the 60S subunit. The protein belongs to the L3P family of ribosomal proteins and it is located in the cytoplasm. The protein can bind to the HIV-1 TAR mRNA, and it has been suggested that the protein contributes to tat-mediated transactivation. This gene is co-transcribed with several small nucleolar RNA genes, which are located in several of this gene's introns. Alternate transcriptional splice variants, encoding different isoforms, have been characterized. As is typical for genes encoding ribosomal proteins, there are multiple processed pseudogenes of this gene dispersed through the genome. [provided by RefSeq, Jul 2008]
Function	The L3 protein is a component of the large subunit of cytoplasmic ribosomes. [UniProt]
Calculated Mw	46 kDa
Cellular Localization	Nucleus, nucleolus. Cytoplasm

Images



ARG55918 anti-RPL3 antibody IHC-P image

Immunohistochemistry: Formalin-fixed and paraffin-embedded Human breast carcinoma stained with ARG55918 anti-RPL3 antibody.



ARG55918 anti-RPL3 antibody WB image

Western blot: 35 µg of MDA-MB-435 cell lysate stained with ARG55918 anti-RPL3 antibody.