

ARG55886 anti-ZNF560 antibody

Package: 50 µl
Store at: -20°C

Summary

Product Description	Rabbit Polyclonal antibody recognizes ZNF560
Tested Reactivity	Hu
Tested Application	WB
Host	Rabbit
Clonality	Polyclonal
Isotype	IgG
Target Name	ZNF560
Species	Human
Immunogen	KLH-conjugated synthetic peptide corresponding to aa. 301-325 (Center) of Human ZNF560.
Conjugation	Un-conjugated
Alternate Names	Zinc finger protein 560

Application Instructions

Application table	Application	Dilution
	WB	1:1000
Application Note	* The dilutions indicate recommended starting dilutions and the optimal dilutions or concentrations should be determined by the scientist.	
Positive Control	HT-1080	

Properties

Form	Liquid
Purification	Purification with Protein A and immunogen peptide.
Buffer	PBS and 0.09% (W/V) Sodium azide
Preservative	0.09% (W/V) Sodium azide
Storage instruction	For continuous use, store undiluted antibody at 2-8°C for up to a week. For long-term storage, aliquot and store at -20°C or below. Storage in frost free freezers is not recommended. Avoid repeated freeze/thaw cycles. Suggest spin the vial prior to opening. The antibody solution should be gently mixed before use.
Note	For laboratory research only, not for drug, diagnostic or other use.

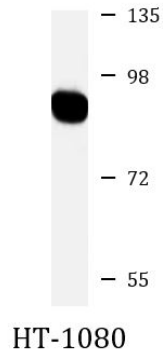
Bioinformation

Database links	GeneID: 147741 Human
----------------	--------------------------------------

[Swiss-port # Q96MR9 Human](#)

Gene Symbol	ZNF560
Gene Full Name	zinc finger protein 560
Function	May be involved in transcriptional regulation. [UniProt]
Calculated Mw	91 kDa

Images



ARG55886 anti-ZNF560 antibody WB image

Western blot: HT-1080 cell lysate stained with ARG55886 anti-ZNF560 antibody at 1:1000 dilution.