

ARG55885 anti-Bmi 1 antibody

Package: 50 µl
Store at: -20°C

Summary

Product Description	Rabbit Polyclonal antibody recognizes Bmi 1
Tested Reactivity	Hu, Ms
Tested Application	ICC/IF, WB
Host	Rabbit
Clonality	Polyclonal
Isotype	IgG
Target Name	Bmi 1
Species	Human
Immunogen	KLH-conjugated synthetic peptide corresponding to aa. 281-314 (C-terminus) of Human Bmi 1.
Conjugation	Un-conjugated
Alternate Names	Polycomb complex protein BMI-1; RING finger protein 51; Polycomb group RING finger protein 4

Application Instructions

Application table	Application	Dilution
	ICC/IF	1:25
	WB	1:1000
Application Note	* The dilutions indicate recommended starting dilutions and the optimal dilutions or concentrations should be determined by the scientist.	

Properties

Form	Liquid
Purification	Affinity purification with immunogen.
Storage instruction	For continuous use, store undiluted antibody at 2-8°C for up to a week. For long-term storage, aliquot and store at -20°C or below. Storage in frost free freezers is not recommended. Avoid repeated freeze/thaw cycles. Suggest spin the vial prior to opening. The antibody solution should be gently mixed before use.
Note	For laboratory research only, not for drug, diagnostic or other use.

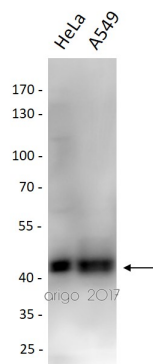
Bioinformation

Gene Symbol	COMMD3-BMI1
Gene Full Name	COMMD3-BMI1 readthrough
Background	This locus represents naturally occurring read-through transcription between the neighboring COMM

domain-containing protein 3 and polycomb complex protein BMI-1 genes on chromosome 10. The read-through transcript produces a fusion protein that shares sequence identity with each individual gene product. [provided by RefSeq, Feb 2011]

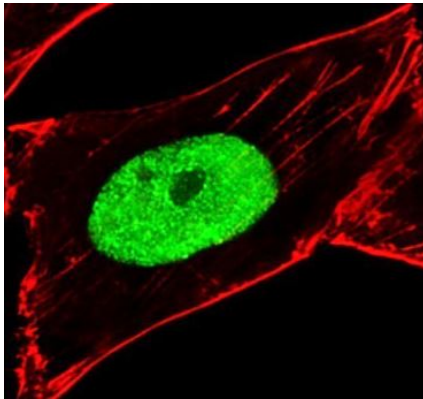
Function	Component of a Polycomb group (PcG) multiprotein PRC1-like complex, a complex class required to maintain the transcriptionally repressive state of many genes, including Hox genes, throughout development. PcG PRC1 complex acts via chromatin remodeling and modification of histones; it mediates monoubiquitination of histone H2A 'Lys-119', rendering chromatin heritably changed in its expressibility. In the PRC1 complex, it is required to stimulate the E3 ubiquitin-protein ligase activity of RNF2/RING2. [UniProt]
Calculated Mw	37 kDa
PTM	Monoubiquitinated (By similarity). May be polyubiquitinated; which does not lead to proteasomal degradation.
Cellular Localization	Nucleus. Cytoplasm.

Images



ARG55885 anti-Bmi 1 antibody WB image

Western blot: 30 µg of HeLa and A549 cell lysates stained with ARG55885 anti-Bmi 1 antibody at 1:1000 dilution.



ARG55885 anti-Bmi 1 antibody ICC/IF image

Immunofluorescence: 4% paraformaldehyde-fixed, 0.1% Triton X-100 permeabilized HeLa cells stained with ARG55885 anti-Bmi 1 antibody at 1:25 dilution (green). Cytoplasmic actin is detected with Alexa Fluor® 555 conjugated with Phalloidin (red) at 1:100 dilution.