

ARG55836 anti-UCHL1 / PGP9.5 antibody

Package: 100 µl
Store at: -20°C

Summary

Product Description	Rabbit Polyclonal antibody recognizes UCHL1 / PGP9.5
Tested Reactivity	Hu, Ms, Rat
Predict Reactivity	Bov, Mk, Pig
Tested Application	FACS, ICC/IF, IHC-P, WB
Host	Rabbit
Clonality	Polyclonal
Isotype	IgG
Target Name	UCHL1 / PGP9.5
Species	Human
Immunogen	KLH-conjugated synthetic peptide corresponding to aa. 187-216 (C-terminus) of Human UCHL1.
Conjugation	Un-conjugated
Alternate Names	PGP95; UCH-L1; PGP9.5; PARK5; Ubiquitin thioesterase L1; HEL-117; Neuron cytoplasmic protein 9.5; Uch-L1; EC 6.-.-.-; PGP 9.5; Ubiquitin carboxyl-terminal hydrolase isozyme L1; NDGOA; EC 3.4.19.12

Application Instructions

Application table	Application	Dilution
	FACS	1:10 - 1:50
	ICC/IF	1:10 - 1:50
	IHC-P	1:50 - 1:100
	WB	1:1000
Application Note	* The dilutions indicate recommended starting dilutions and the optimal dilutions or concentrations should be determined by the scientist.	
Positive Control	SH-SY5Y	

Properties

Form	Liquid
Purification	This antibody is prepared by Saturated Ammonium Sulfate (SAS) precipitation followed by dialysis against PBS.
Buffer	PBS and 0.09% (W/V) Sodium azide
Preservative	0.09% (W/V) Sodium azide
Storage instruction	For continuous use, store undiluted antibody at 2-8°C for up to a week. For long-term storage, aliquot and store at -20°C or below. Storage in frost free freezers is not recommended. Avoid repeated freeze/thaw cycles. Suggest spin the vial prior to opening. The antibody solution should be gently mixed

before use.

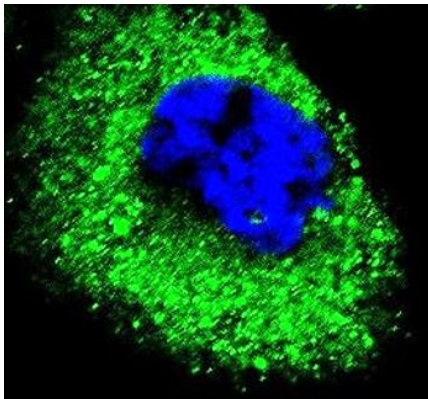
Note

For laboratory research only, not for drug, diagnostic or other use.

Bioinformation

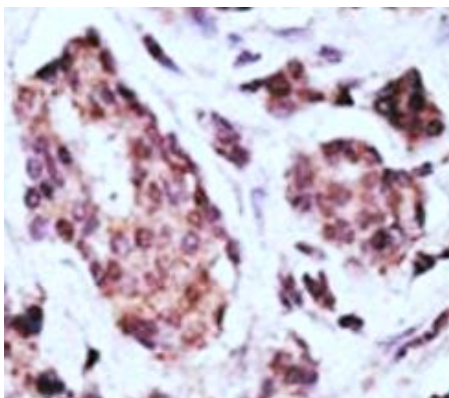
Gene Symbol	UCHL1
Gene Full Name	ubiquitin carboxyl-terminal esterase L1 (ubiquitin thiolesterase)
Background	The protein encoded by this gene belongs to the peptidase C12 family. This enzyme is a thiol protease that hydrolyzes a peptide bond at the C-terminal glycine of ubiquitin. This gene is specifically expressed in the neurons and in cells of the diffuse neuroendocrine system. Mutations in this gene may be associated with Parkinson disease.[provided by RefSeq, Sep 2009]
Function	Ubiquitin-protein hydrolase involved both in the processing of ubiquitin precursors and of ubiquitinated proteins. This enzyme is a thiol protease that recognizes and hydrolyzes a peptide bond at the C-terminal glycine of ubiquitin. Also binds to free monoubiquitin and may prevent its degradation in lysosomes. The homodimer may have ATP-independent ubiquitin ligase activity. [UniProt]
Calculated Mw	25 kDa
PTM	O-glycosylated.
Cellular Localization	Cytoplasm. Endoplasmic reticulum membrane; Lipid-anchor. Note=About 30% of total UCHL1 is associated with membranes in brain

Images



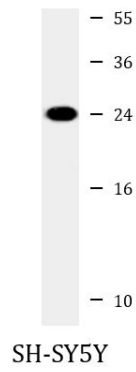
ARG55836 anti-UCHL1 / PGP9.5 antibody ICC/IF image

Immunofluorescence: NCI-H460 cells stained with ARG55836 anti-UCHL1 / PGP9.5 antibody (green). DAPI (blue) for nuclear staining.



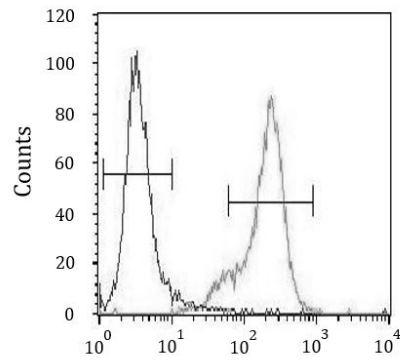
ARG55836 anti-UCHL1 / PGP9.5 antibody IHC-P image

Immunohistochemistry: Formalin-fixed and paraffin-embedded Human cancer tissue stained with ARG55836 anti-UCHL1 / PGP9.5 antibody.



ARG55836 anti-UCHL1 / PGP9.5 antibody WB image

Western blot: 35 µg of SH-SY5Y cell lysate stained with ARG55836 anti-UCHL1 / PGP9.5 antibody.



ARG55836 anti-UCHL1 / PGP9.5 antibody FACS image

Flow Cytometry: NCI-H460 cells stained with ARG55836 anti-UCHL1 / PGP9.5 antibody (right histogram) or without primary antibody control (left histogram), followed by incubation with FITC labelled secondary antibody.