

ARG55767 anti-Lysozyme antibody

Package: 100 µl
Store at: -20°C

Summary

Product Description	Rabbit Polyclonal antibody recognizes Lysozyme
Tested Reactivity	Hu
Tested Application	IHC-P, WB
Host	Rabbit
Clonality	Polyclonal
Isotype	IgG
Target Name	Lysozyme
Species	Human
Immunogen	KLH-conjugated synthetic peptide corresponding to aa. 119-154 (C-terminus) of Human Lysozyme.
Conjugation	Un-conjugated
Alternate Names	EC 3.2.1.17; Lysozyme C; LZM; 1,4-beta-N-acetylmuramidase C

Application Instructions

Application table	Application	Dilution
	IHC-P	1:25
	WB	1:1000
Application Note	* The dilutions indicate recommended starting dilutions and the optimal dilutions or concentrations should be determined by the scientist.	
Positive Control	HepG2	

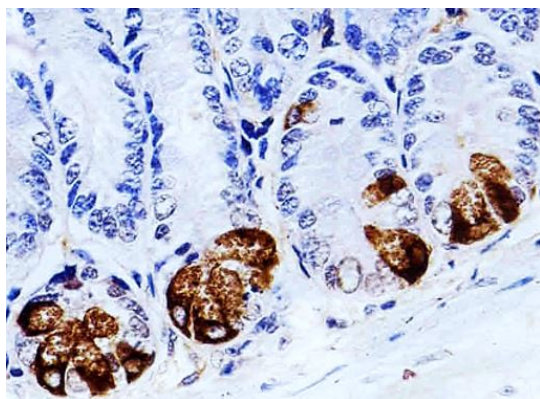
Properties

Form	Liquid
Purification	Purification with Protein A and immunogen peptide.
Buffer	PBS and 0.09% (W/V) sodium azide.
Preservative	0.09% (W/V) sodium azide.
Storage instruction	For continuous use, store undiluted antibody at 2-8°C for up to a week. For long-term storage, aliquot and store at -20°C or below. Storage in frost free freezers is not recommended. Avoid repeated freeze/thaw cycles. Suggest spin the vial prior to opening. The antibody solution should be gently mixed before use.
Note	For laboratory research only, not for drug, diagnostic or other use.

Bioinformation

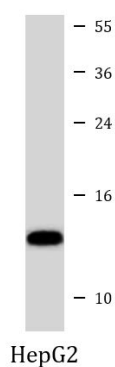
Database links	GeneID: 4069 Human Swiss-port # P61626 Human
Gene Symbol	LYZ
Gene Full Name	lysozyme
Background	This gene encodes human lysozyme, whose natural substrate is the bacterial cell wall peptidoglycan (cleaving the beta[1-4]glycosidic linkages between N-acetylmuramic acid and N-acetylglucosamine). Lysozyme is one of the antimicrobial agents found in human milk, and is also present in spleen, lung, kidney, white blood cells, plasma, saliva, and tears. The protein has antibacterial activity against a number of bacterial species. Missense mutations in this gene have been identified in heritable renal amyloidosis. [provided by RefSeq, Oct 2014]
Function	Lysozymes have primarily a bacteriolytic function; those in tissues and body fluids are associated with the monocyte-macrophage system and enhance the activity of immunoagents. [UniProt]
Calculated Mw	17 kDa
Cellular Localization	Secreted.

Images



ARG55767 anti-Lysozyme antibody IHC-P image

Immunohistochemistry: Paraffin-embedded Mouse small intestine tissue stained with ARG55767 anti-Lysozyme antibody at 1:100 dilution.



ARG55767 anti-Lysozyme antibody WB image

Western blot: 35 µg of HepG2 cell lysate stained with ARG55767 anti-Lysozyme antibody at 1:1000 dilution.