

ARG55756 anti-Antithrombin III antibody

Package: 100 µl
Store at: -20°C

Summary

Product Description	Rabbit Polyclonal antibody recognizes Antithrombin III
Tested Reactivity	Hu, Ms
Tested Application	FACS, ICC/IF, IHC-P, WB
Host	Rabbit
Clonality	Polyclonal
Isotype	IgG
Target Name	Antithrombin III
Species	Human
Immunogen	KLH-conjugated synthetic peptide corresponding to aa. 364-393 (C-terminus) of Human Antithrombin III.
Conjugation	Un-conjugated
Alternate Names	AT3D; Antithrombin-III; ATIII; Serpin C1; AT3; THPH7

Application Instructions

Application table	Application	Dilution
	FACS	1:10 - 1:50
	ICC/IF	1:10 - 1:50
	IHC-P	1:50 - 1:100
	WB	1:1000
Application Note	* The dilutions indicate recommended starting dilutions and the optimal dilutions or concentrations should be determined by the scientist.	
Positive Control	Human blood plasma	

Properties

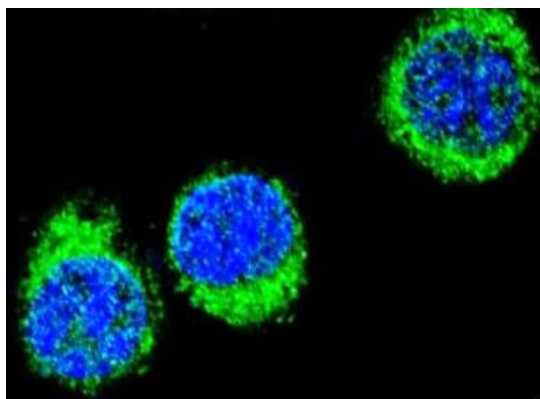
Form	Liquid
Purification	This antibody is prepared by Saturated Ammonium Sulfate (SAS) precipitation followed by dialysis against PBS.
Buffer	PBS and 0.09% (W/V) Sodium azide.
Preservative	0.09% (W/V) Sodium azide.
Storage instruction	For continuous use, store undiluted antibody at 2-8°C for up to a week. For long-term storage, aliquot and store at -20°C or below. Storage in frost free freezers is not recommended. Avoid repeated freeze/thaw cycles. Suggest spin the vial prior to opening. The antibody solution should be gently mixed before use.

Note For laboratory research only, not for drug, diagnostic or other use.

Bioinformation

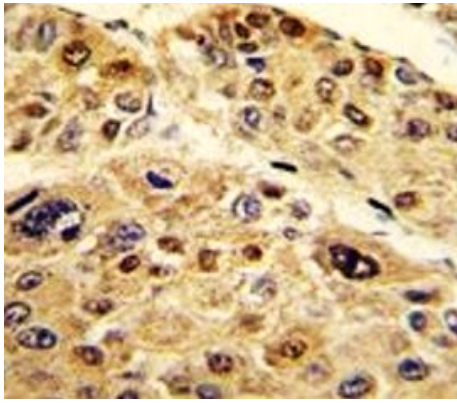
Database links	GeneID: 11905 Mouse GeneID: 462 Human Swiss-port # P01008 Human Swiss-port # P32261 Mouse
Gene Symbol	SERPINC1
Gene Full Name	serpin peptidase inhibitor, clade C (antithrombin), member 1
Background	The protein encoded by this gene is a plasma protease inhibitor and a member of the serpin superfamily. This protein inhibits thrombin as well as other activated serine proteases of the coagulation system, and it regulates the blood coagulation cascade. The protein includes two functional domains: the heparin binding-domain at the N-terminus of the mature protein, and the reactive site domain at the C-terminus. The inhibitory activity is enhanced by the presence of heparin. More than 120 mutations have been identified for this gene, many of which are known to cause antithrombin-III deficiency. [provided by RefSeq, Jul 2009]
Function	Most important serine protease inhibitor in plasma that regulates the blood coagulation cascade. AT-III inhibits thrombin, matriptase-3/TMPRSS7, as well as factors IXa, Xa and XIa. Its inhibitory activity is greatly enhanced in the presence of heparin. [UniProt]
Calculated Mw	53 kDa
PTM	Phosphorylated by FAM20C in the extracellular medium.
Cellular Localization	Secreted, extracellular space.

Images



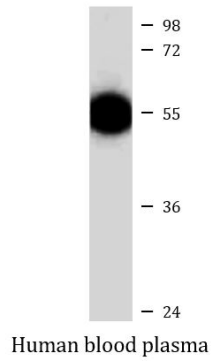
ARG55756 anti-Antithrombin III antibody ICC/IF image

Immunofluorescence: 293 cells stained with ARG55756 anti-Antithrombin III antibody (green). DAPI (blue) for nuclear staining.



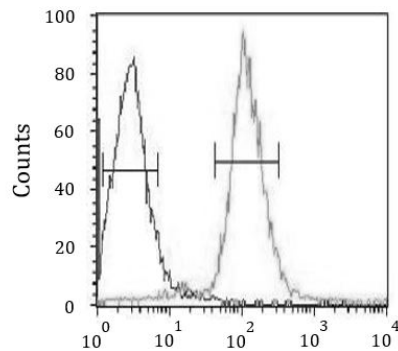
ARG55756 anti-Antithrombin III antibody IHC-P image

Immunohistochemistry: Formalin-fixed and paraffin-embedded Human hepatocarcinoma stained with ARG55756 anti-Antithrombin III antibody.



ARG55756 anti-Antithrombin III antibody WB image

Western blot: 35 µg of Human blood plasma lysate stained with ARG55756 anti-Antithrombin III antibody at 1:1000 dilution.



ARG55756 anti-Antithrombin III antibody FACS image

Flow Cytometry: HepG2 cells stained with ARG55756 anti-Antithrombin III antibody (right histogram) or without primary antibody control (left histogram), followed by incubation with FITC labelled secondary antibody.