

ARG55744 anti-RFP antibody

Package: 100 µg
Store at: -20°C

Summary

Product Description	Goat Polyclonal antibody recognizes RFP
Tested Reactivity	Other
Tested Application	ICC/IF, IHC-Fr, IHC-P, WB
Specificity	This antibody recognizes red fluorescent protein (dsRed), mCherry, mOrange, mPlum, mRFP, mStrawberry and tdTomato. It does not cross-react to GFP.
Host	Goat
Clonality	Polyclonal
Isotype	IgG
Target Name	RFP
Immunogen	Purified recombinant RFP peptide produced in E. coli
Conjugation	Un-conjugated
Alternate Names	Cherry fluorescent protein; dsRed; red fluorescent protein; tdTomato

Application Instructions

Application table	Application	Dilution
	ICC/IF	1:50-1:500
	IHC-Fr	1:50-1:500
	IHC-P	1:50-1:500
	WB	1:500-1:2000
Application Note	* The dilutions indicate recommended starting dilutions and the optimal dilutions or concentrations should be determined by the scientist.	

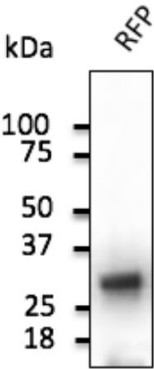
Properties

Form	Liquid
Purification	Affinity purification with immunogen.
Buffer	PBS, 0.05% Sodium azide and 20% Glycerol
Preservative	0.05% Sodium azide
Stabilizer	20% Glycerol
Concentration	3 mg/ml
Storage instruction	For continuous use, store undiluted antibody at 2-8°C for up to a week. For long-term storage, aliquot and store at -20°C. Storage in frost free freezers is not recommended. Avoid repeated freeze/thaw cycles. Suggest spin the vial prior to opening. The antibody solution should be gently mixed before use.

Bioinformation

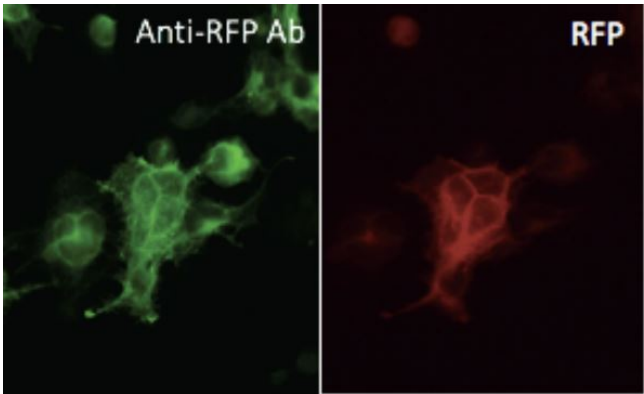
Research Area Controls and Markers antibody; Tag Internal Control antibody; Fluorescent-Tags antibody

Images



ARG55744 anti-RFP antibody WB image

Western blot: 50 µg of 293HEK cells transduced with RFP Ad stained with ARG55744 anti-RFP antibody at 1:2000 dilution.



ARG55744 anti-RFP antibody ICC/IF image

Immunocytochemistry: 293HEK cells transfected with RFP stained with ARG55744 anti-RFP antibody at 1:50 dilution. Cells were fixed with 4% PFA.