

ARG55724
anti-tdTomato antibodyPackage: 100 µg
Store at: -20°C

Summary

Product Description	Goat Polyclonal antibody recognizes tdTomato
Tested Reactivity	Other
Tested Application	ICC/IF, IHC-Fr, IHC-P, WB
Specificity	This antibody recognizes tdTomato, mCherry, mApple and red fluorescent protein (DsRed). It does not cross-react to GFP.
Host	Goat
Clonality	Polyclonal
Isotype	IgG
Target Name	tdTomato
Immunogen	Purified full-length recombinant protein produced in E. coli.
Conjugation	Un-conjugated
Alternate Names	Cherry fluorescent protein; DsRed; mCherry; red fluorescent protein; RFP

Application Instructions

Application table	Application	Dilution
	ICC/IF	1:50-1:500
	IHC-Fr	1:50-1:500
	IHC-P	1:50-1:500
	WB	1:500-1:2000

Application Note * The dilutions indicate recommended starting dilutions and the optimal dilutions or concentrations should be determined by the scientist.

Properties

Form	Liquid
Purification	Affinity purification with immunogen.
Buffer	PBS, 0.05% Sodium azide and 20% Glycerol
Preservative	0.05% Sodium azide
Stabilizer	20% Glycerol
Concentration	3 mg/ml
Storage instruction	For continuous use, store undiluted antibody at 2-8°C for up to a week. For long-term storage, aliquot and store at -20°C. Storage in frost free freezers is not recommended. Avoid repeated freeze/thaw cycles. Suggest spin the vial prior to opening. The antibody solution should be gently mixed before use.

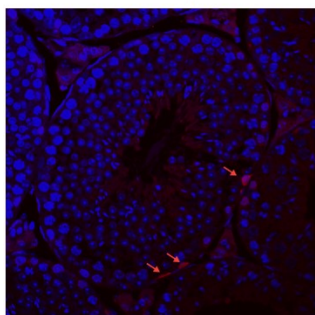
Bioinformation

Background

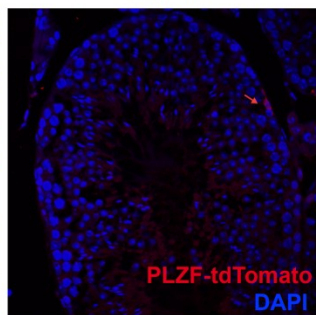
tdTomato protein is derived from DsRed, an engineered red fluorescent protein from so-called disc corals of the genus *Discosoma*. It is a genetic fusion of two copies of the dTomato gene, which has been specifically designed for low aggregation. It's brightness and emission wavelength makes it ideal for live animal research.

Images

Wild-type



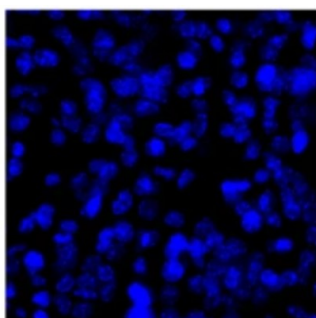
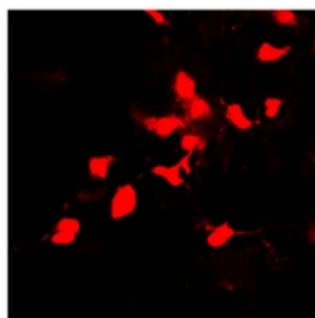
Gcna1Y



ARG55724 anti-tdTomato antibody IHC-P image

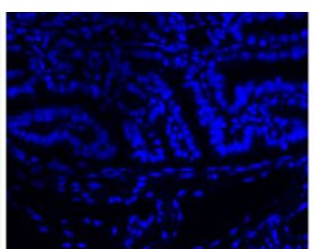
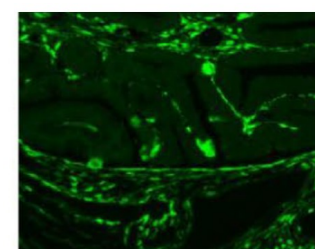
Immunohistochemistry: Mouse testis stained with ARG55724 anti-tdTomato antibody at 1:100 dilution.

From Jonathan Ribeiro et al. *Nucleic Acids Res.* (2023), [doi: 10.1093/nar/gkad168](https://doi.org/10.1093/nar/gkad168), Fig. S5.



ARG55724 anti-tdTomato antibody ICC/IF image

Immunofluorescence: N2a cells transfected with tdTomato reporter plasmid and stained with ARG55724 anti-tdTomato antibody at 1:200 dilution. Cells were fixed with 4% of PFA. Cell nuclei were stained with DAPI (blue).



ARG55724 anti-tdTomato antibody IHC-P image

Immunohistochemistry: Paraffin-embedded Mouse Oviducts stained with ARG55724 anti-tdTomato antibody at 1:500 dilution (overnight at 4°C). Secondary antibody: Alexa Fluor 488-Goat anti-Goat (green) at 1:500 dilution (2 hours at RT).

ARG55724 anti-tdTomato antibody WB image

Western blot: 50µg of mApple plasmid transfected HEK293 cell lysate stained with ARG55724 anti-tdTomato antibody at 1:2500 dilution.

