

ARG55687 anti-MDH1 antibody

Package: 100 µl
Store at: -20°C

Summary

Product Description	Rabbit Polyclonal antibody recognizes MDH1
Tested Reactivity	Hu
Predict Reactivity	Ms, Rat, Bov, Chk, Pig
Tested Application	FACS, IHC-P, WB
Host	Rabbit
Clonality	Polyclonal
Isotype	IgG
Target Name	MDH1
Species	Human
Immunogen	KLH-conjugated synthetic peptide corresponding to aa. 286-314 (C-terminus) of Human MDH1.
Conjugation	Un-conjugated
Alternate Names	Diiodophenylpyruvate reductase; MDHA; MOR2; HEL-S-32; Cytosolic malate dehydrogenase; EC 1.1.1.37; Malate dehydrogenase, cytoplasmic; EC 1.1.1.96; MDH-s; MGC:1375

Application Instructions

Application table	Application	Dilution
	FACS	1:10 - 1:50
	IHC-P	1:10 - 1:50
	WB	1:1000
Application Note	* The dilutions indicate recommended starting dilutions and the optimal dilutions or concentrations should be determined by the scientist.	
Positive Control	HL-60	

Properties

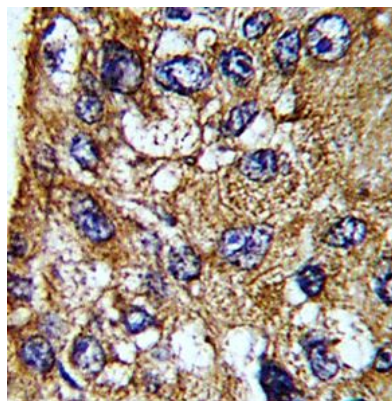
Form	Liquid
Purification	This antibody is prepared by Saturated Ammonium Sulfate (SAS) precipitation followed by dialysis against PBS.
Buffer	PBS and 0.09% (W/V) Sodium azide.
Preservative	0.09% (W/V) Sodium azide.
Storage instruction	For continuous use, store undiluted antibody at 2-8°C for up to a week. For long-term storage, aliquot and store at -20°C or below. Storage in frost free freezers is not recommended. Avoid repeated freeze/thaw cycles. Suggest spin the vial prior to opening. The antibody solution should be gently mixed before use.

Note For laboratory research only, not for drug, diagnostic or other use.

Bioinformation

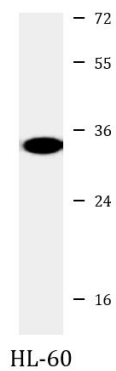
Database links	GeneID: 4190 Human Swiss-port # P40925 Human
Gene Symbol	MDH1
Gene Full Name	malate dehydrogenase 1, NAD (soluble)
Background	Malate dehydrogenase catalyzes the reversible oxidation of malate to oxaloacetate, utilizing the NAD/NADH cofactor system in the citric acid cycle. The protein encoded by this gene is localized to the cytoplasm and may play pivotal roles in the malate-aspartate shuttle that operates in the metabolic coordination between cytosol and mitochondria. Alternatively spliced transcript variants encoding distinct isoforms have been found for this gene.[provided by RefSeq, Nov 2010]
Highlight	Related products: Malate Dehydrogenase antibodies ; Malate Dehydrogenase ELISA Kits ; Anti-Rabbit IgG secondary antibodies ; Related news: TCA intermediate fumarate promotes mitobiogenesis
Calculated Mw	36 kDa
PTM	ISGylated. Acetylation at Lys-118 dramatically enhances enzymatic activity and promotes adipogenic differentiation.
Cellular Localization	Cytoplasm.

Images



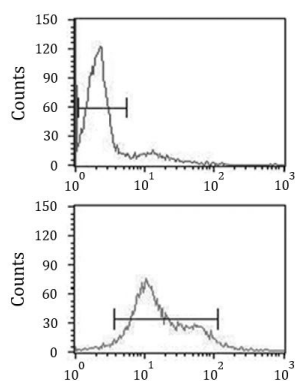
ARG55687 anti-MDH1 antibody IHC-P image

Immunohistochemistry: Formalin-fixed and paraffin-embedded Human hepatocarcinoma stained with ARG55687 anti-MDH1 antibody.



ARG55687 anti-MDH1 antibody WB image

Western blot: 35 μ g of HL-60 cell lysate stained with ARG55687 anti-MDH1 antibody.



ARG55687 anti-MDH1 antibody FACS image

Flow Cytometry: HL-60 cells stained with ARG55687 anti-MDH1 antibody (bottom histogram) or without primary antibody as control (top histogram), followed by incubation with FITC labelled secondary antibody.