

## ARG55678 anti-Maspin antibody

Package: 100 µl  
Store at: -20°C

### Summary

Product Description	Rabbit Polyclonal antibody recognizes Maspin
Tested Reactivity	Hu
Predict Reactivity	Ms
Tested Application	ICC/IF, IHC-P, WB
Host	Rabbit
Clonality	Polyclonal
Isotype	IgG
Target Name	Maspin
Species	Human
Immunogen	KLH-conjugated synthetic peptide corresponding to aa. 94-123 (Center) of Human Maspin.
Conjugation	Un-conjugated
Alternate Names	PI-5; PI5; Maspin; Serpin B5; maspin; Peptidase inhibitor 5

### Application Instructions

Application table	Application	Dilution
	ICC/IF	1:10 - 1:50
	IHC-P	1:50 - 1:100
	WB	1:1000
Application Note	* The dilutions indicate recommended starting dilutions and the optimal dilutions or concentrations should be determined by the scientist.	
Positive Control	HeLa	

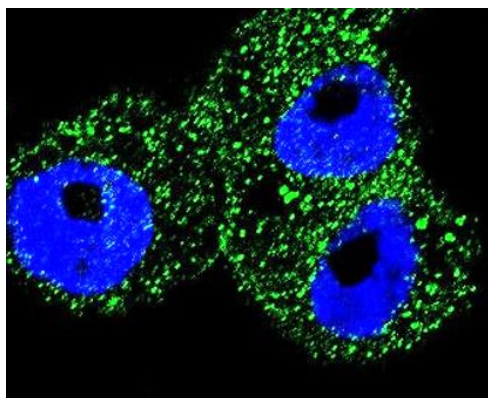
### Properties

Form	Liquid
Purification	Purification with Protein A and immunogen peptide.
Buffer	PBS and 0.09% (W/V) Sodium azide.
Preservative	0.09% (W/V) Sodium azide.
Storage instruction	For continuous use, store undiluted antibody at 2-8°C for up to a week. For long-term storage, aliquot and store at -20°C or below. Storage in frost free freezers is not recommended. Avoid repeated freeze/thaw cycles. Suggest spin the vial prior to opening. The antibody solution should be gently mixed before use.
Note	For laboratory research only, not for drug, diagnostic or other use.

## Bioinformation

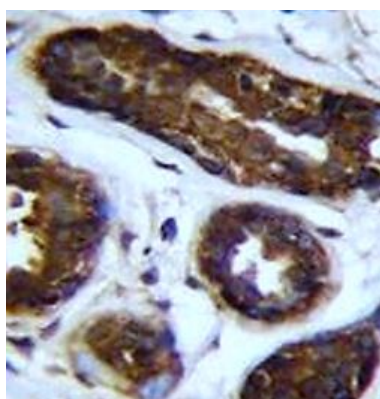
Database links	<a href="#">GeneID: 5268 Human</a> <a href="#">Swiss-port # P36952 Human</a>
Gene Symbol	SERPINB5
Gene Full Name	serpin peptidase inhibitor, clade B (ovalbumin), member 5
Function	Tumor suppressor. It blocks the growth, invasion, and metastatic properties of mammary tumors. As it does not undergo the S (stressed) to R (relaxed) conformational transition characteristic of active serpins, it exhibits no serine protease inhibitory activity. [UniProt]
Calculated Mw	42 kDa
Cellular Localization	Secreted, extracellular space.

## Images



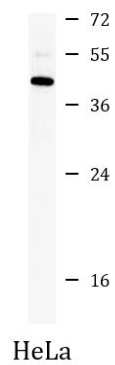
ARG55678 anti-Maspin antibody ICC/IF image

Immunofluorescence: A2058 cells stained with ARG55678 anti-Maspin antibody (green). DAPI (blue) for nuclear staining.



ARG55678 anti-Maspin antibody IHC-P image

Immunohistochemistry: Formalin-fixed and paraffin-embedded Human breast tissue stained with ARG55678 anti-Maspin antibody.



#### ARG55678 anti-Maspin antibody WB image

Western blot: 35 µg of HeLa cell lysate stained with ARG55678 anti-Maspin antibody at 1:1000 dilution.