

## ARG55652 anti-Neurotrophin 3 antibody

Package: 100 µl  
Store at: -20°C

### Summary

Product Description	Rabbit Polyclonal antibody recognizes Neurotrophin 3
Tested Reactivity	Hu, Ms
Tested Application	IHC-P, WB
Host	Rabbit
Clonality	Polyclonal
Isotype	IgG
Target Name	Neurotrophin 3
Species	Human
Immunogen	Recombinant protein of Human Neurotrophin 3
Conjugation	Un-conjugated
Alternate Names	Nerve growth factor 2; NT3; HDNF; Neurotrophic factor; Neurotrophin-3; NT-3; NGF2; NGF-2

### Application Instructions

Predict Reactivity Note	Mouse, Rat						
Application table	<table> <tr> <th>Application</th><th>Dilution</th></tr> <tr> <td>IHC-P</td><td>1:50 - 1:200</td></tr> <tr> <td>WB</td><td>1:500 - 1:1000</td></tr> </table>	Application	Dilution	IHC-P	1:50 - 1:200	WB	1:500 - 1:1000
Application	Dilution						
IHC-P	1:50 - 1:200						
WB	1:500 - 1:1000						
Application Note	* The dilutions indicate recommended starting dilutions and the optimal dilutions or concentrations should be determined by the scientist.						
Positive Control	HT-29						
Observed Size	~ 31 kDa						

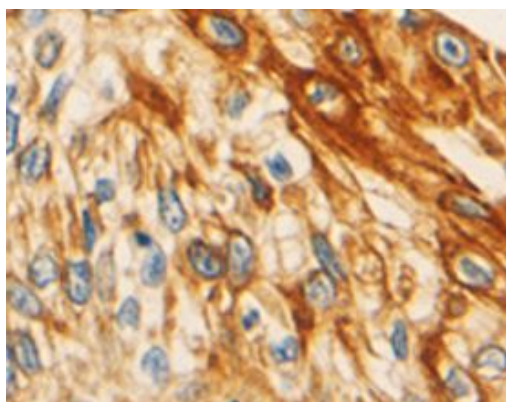
### Properties

Form	Liquid
Purification	Affinity purification with immunogen.
Buffer	PBS (pH 7.3), 0.02% Sodium azide and 50% Glycerol.
Preservative	0.02% Sodium azide
Stabilizer	50% Glycerol
Storage instruction	For continuous use, store undiluted antibody at 2-8°C for up to a week. For long-term storage, aliquot and store at -20°C. Storage in frost free freezers is not recommended. Avoid repeated freeze/thaw cycles. Suggest spin the vial prior to opening. The antibody solution should be gently mixed before use.

## Bioinformation

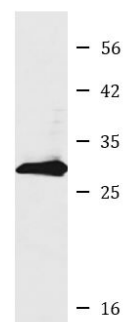
Database links	<a href="#">GeneID: 18205 Mouse</a> <a href="#">GeneID: 4908 Human</a> <a href="#">Swiss-port # P20181 Mouse</a> <a href="#">Swiss-port # P20783 Human</a>
Gene Symbol	NTF3
Gene Full Name	neurotrophin 3
Background	The protein encoded by this gene is a member of the neurotrophin family, that controls survival and differentiation of mammalian neurons. This protein is closely related to both nerve growth factor and brain-derived neurotrophic factor. It may be involved in the maintenance of the adult nervous system, and may affect development of neurons in the embryo when it is expressed in human placenta. NTF3-deficient mice generated by gene targeting display severe movement defects of the limbs. The mature peptide of this protein is identical in all mammals examined including human, pig, rat and mouse. [provided by RefSeq, Jul 2008]
Function	Seems to promote the survival of visceral and proprioceptive sensory neurons. [UniProt]
Calculated Mw	29 kDa

## Images



ARG55652 anti-Neurotrophin 3 antibody IHC-P image

Immunohistochemistry: Paraffin-embedded Human esophagus cancer tissue stained with ARG55652 anti-Neurotrophin 3 antibody.



HT-29

ARG55652 anti-Neurotrophin 3 antibody WB image

Western blot: HT-29 cell lysate stained with ARG55652 anti-Neurotrophin 3 antibody.