

ARG55640 anti-TIMP2 antibody

Package: 50 µl
Store at: -20°C

Summary

Product Description	Rabbit Polyclonal antibody recognizes TIMP2
Tested Reactivity	Hu
Predict Reactivity	Ms, Rat
Tested Application	ICC/IF, WB
Host	Rabbit
Clonality	Polyclonal
Isotype	IgG
Target Name	TIMP2
Species	Human
Immunogen	Synthetic peptide corresponding to aa. 40-68 of Human TIMP2.
Conjugation	Un-conjugated
Alternate Names	TIMP-2; Tissue inhibitor of metalloproteinases 2; CSC-21K; DDC8; Metalloproteinase inhibitor 2

Application Instructions

Application table	Application	Dilution
	ICC/IF	1:100
	WB	1:1000
Application Note	* The dilutions indicate recommended starting dilutions and the optimal dilutions or concentrations should be determined by the scientist.	
Positive Control	HT1080	

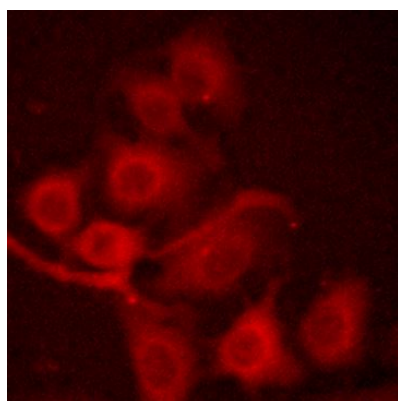
Properties

Form	Liquid
Purification	Affinity purification with immunogen.
Buffer	PBS (without Mg2+ and Ca2+, pH 7.4), 150mM NaCl, 0.02% Sodium azide and 50% Glycerol
Preservative	0.02% Sodium azide
Stabilizer	50% Glycerol
Storage instruction	For continuous use, store undiluted antibody at 2-8°C for up to a week. For long-term storage, aliquot and store at -20°C or below. Storage in frost free freezers is not recommended. Avoid repeated freeze/thaw cycles. Suggest spin the vial prior to opening. The antibody solution should be gently mixed before use.
Note	For laboratory research only, not for drug, diagnostic or other use.

Bioinformation

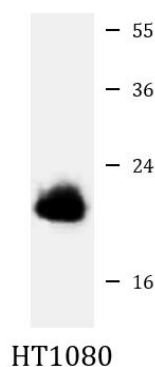
Database links	GeneID: 7077 Human Swiss-port # P16035 Human
Gene Symbol	TIMP2
Gene Full Name	TIMP metalloproteinase inhibitor 2
Background	This gene is a member of the TIMP gene family. The proteins encoded by this gene family are natural inhibitors of the matrix metalloproteinases, a group of peptidases involved in degradation of the extracellular matrix. In addition to an inhibitory role against metalloproteinases, the encoded protein has a unique role among TIMP family members in its ability to directly suppress the proliferation of endothelial cells. As a result, the encoded protein may be critical to the maintenance of tissue homeostasis by suppressing the proliferation of quiescent tissues in response to angiogenic factors, and by inhibiting protease activity in tissues undergoing remodelling of the extracellular matrix. [provided by RefSeq, Jul 2008]
Function	Complexes with metalloproteinases (such as collagenases) and irreversibly inactivates them by binding to their catalytic zinc cofactor. Known to act on MMP-1, MMP-2, MMP-3, MMP-7, MMP-8, MMP-9, MMP-10, MMP-13, MMP-14, MMP-15, MMP-16 and MMP-19. [UniProt]
Calculated Mw	24 kDa
PTM	The activity of TIMP2 is dependent on the presence of disulfide bonds.

Images



ARG55640 anti-TIMP2 antibody ICC/IF image

Immunofluorescence: A549 cells stained with ARG55640 anti-TIMP2 antibody.



ARG55640 anti-TIMP2 antibody WB image

Western blot: 35 µg of HT1080 cell lysate stained with ARG55640 anti-TIMP2 antibody at 1:1000 dilution.