

ARG55618 anti-HES1 antibody (Center)

Package: 100 µl
Store at: -20°C

Summary

Product Description	Rabbit Polyclonal antibody recognizes HES1 (Center)
Tested Reactivity	Ms
Tested Application	WB
Host	Rabbit
Clonality	Polyclonal
Isotype	IgG
Target Name	HES1
Species	Mouse
Immunogen	KLH-conjugated synthetic peptide corresponding to aa. 102-137 (Center) of Mouse HES1.
Conjugation	Un-conjugated
Alternate Names	bHLHb39; Hry; Transcription factor HES-1; Hairy and enhancer of split 1

Application Instructions

Application table	Application	Dilution
	WB	1:1000
Application Note	* The dilutions indicate recommended starting dilutions and the optimal dilutions or concentrations should be determined by the scientist.	
Positive Control	Mouse kidney	

Properties

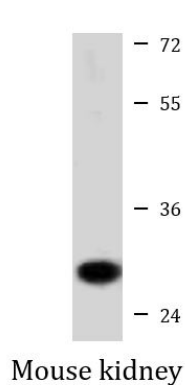
Form	Liquid
Purification	Purification with Protein A and immunogen peptide.
Buffer	PBS and 0.09% (W/V) Sodium azide
Preservative	0.09% (W/V) Sodium azide
Storage instruction	For continuous use, store undiluted antibody at 2-8°C for up to a week. For long-term storage, aliquot and store at -20°C or below. Storage in frost free freezers is not recommended. Avoid repeated freeze/thaw cycles. Suggest spin the vial prior to opening. The antibody solution should be gently mixed before use.
Note	For laboratory research only, not for drug, diagnostic or other use.

Bioinformation

Database links	GeneID: 15205 Mouse
----------------	-------------------------------------

Gene Symbol	Hes1
Gene Full Name	hairy and enhancer of split 1 (Drosophila)
Function	Transcriptional repressor of genes that require a bHLH protein for their transcription. May act as a negative regulator of myogenesis by inhibiting the functions of MYOD1 and ASH1 (By similarity). Binds DNA on N-box motifs: 5'-CACNAG-3' with high affinity and on E-box motifs: 5'-CANNTG-3' with low affinity. May play a role in a functional FA core complex response to DNA cross-link damage, being required for the stability and nuclear localization of FA core complex proteins, as well as for FANCD2 monoubiquitination in response to DNA damage (By similarity). [UniProt]
Research Area	Gene Regulation antibody; Neuroscience antibody
Calculated Mw	30 kDa
Cellular Localization	Nucleus.

Images



ARG55618 anti-HES1 antibody (Center) WB image

Western blot: 20 µg of Mouse kidney lysate stained with ARG55618 anti-HES1 antibody (Center) at 1:1000 dilution.