

ARG55598
anti-ROS1 antibody

Package: 100 µl

Store at: -20°C

Summary

Product Description	Rabbit Polyclonal antibody recognizes ROS1
Tested Reactivity	Hu
Tested Application	WB
Host	Rabbit
Clonality	Polyclonal
Isotype	IgG
Target Name	ROS1
Species	Human
Immunogen	KLH-conjugated synthetic peptide corresponding to aa. 1744-1777 (C-terminus) of Human ROS1.
Conjugation	Un-conjugated
Alternate Names	Proto-oncogene c-Ros-1; MCF3; c-ros-1; Receptor tyrosine kinase c-ros oncogene 1; Proto-oncogene tyrosine-protein kinase ROS; c-Ros receptor tyrosine kinase; ROS; EC 2.7.10.1; Proto-oncogene c-Ros

Application Instructions

Application table	Application	Dilution
	WB	1:1000
Application Note	* The dilutions indicate recommended starting dilutions and the optimal dilutions or concentrations should be determined by the scientist.	
Positive Control	U-87 MG	

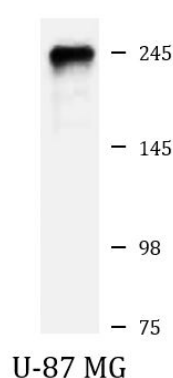
Properties

Form	Liquid
Purification	Purification with Protein A and immunogen peptide.
Buffer	PBS and 0.09% (W/V) Sodium azide
Preservative	0.09% (W/V) Sodium azide
Storage instruction	For continuous use, store undiluted antibody at 2-8°C for up to a week. For long-term storage, aliquot and store at -20°C or below. Storage in frost free freezers is not recommended. Avoid repeated freeze/thaw cycles. Suggest spin the vial prior to opening. The antibody solution should be gently mixed before use.
Note	For laboratory research only, not for drug, diagnostic or other use.

Bioinformation

Database links	GeneID: 6098 Human Swiss-port # P08922 Human
Gene Symbol	ROS1
Gene Full Name	ROS proto-oncogene 1 , receptor tyrosine kinase
Background	This proto-oncogene, highly-expressed in a variety of tumor cell lines, belongs to the sevenless subfamily of tyrosine kinase insulin receptor genes. The protein encoded by this gene is a type I integral membrane protein with tyrosine kinase activity. The protein may function as a growth or differentiation factor receptor. [provided by RefSeq, Jul 2008]
Function	Orphan receptor tyrosine kinase (RTK) that plays a role in epithelial cell differentiation and regionalization of the proximal epididymal epithelium. May activate several downstream signaling pathways related to cell differentiation, proliferation, growth and survival including the PI3 kinase-mTOR signaling pathway. Mediates the phosphorylation of PTPN11, an activator of this pathway. May also phosphorylate and activate the transcription factor STAT3 to control anchorage-independent cell growth. Mediates the phosphorylation and the activation of VAV3, a guanine nucleotide exchange factor regulating cell morphology. May activate other downstream signaling proteins including AKT1, MAPK1, MAPK3, IRS1 and PLCG2. [UniProt]
Research Area	Cancer antibody; Gene Regulation antibody; Signaling Transduction antibody
Calculated Mw	264 kDa
PTM	Phosphorylated. Probably autophosphorylates. Phosphorylation at Tyr-2274 is required for the interaction with PTPN6 that mediates ROS1 dephosphorylation (By similarity). Phosphorylation at Tyr-2274 stimulates the kinase activity and the activation of the ERK1 signaling cascade (By similarity). Phosphorylation at Tyr-2274 and/or Tyr-2334 recruits PTPN11.
Cellular Localization	Cell membrane; Single-pass type I membrane protein

Images



ARG55598 anti-ROS1 antibody WB image

Western blot: 20 µg of U-87 MG cell lysate stained with ARG55598 anti-ROS1 antibody at 1:1000 dilution.