

## ARG55585 anti-GATA6 antibody

Package: 100 µl  
Store at: -20°C

### Summary

Product Description	Rabbit Polyclonal antibody recognizes GATA6
Tested Reactivity	Hu
Tested Application	WB
Host	Rabbit
Clonality	Polyclonal
Isotype	IgG
Target Name	GATA6
Species	Human
Immunogen	KLH-conjugated synthetic peptide corresponding to aa. 551-585 (C-terminus) of Human GATA6.
Conjugation	Un-conjugated
Alternate Names	GATA-binding factor 6; Transcription factor GATA-6

### Application Instructions

Application table	Application	Dilution
	WB	1:1000
Application Note	* The dilutions indicate recommended starting dilutions and the optimal dilutions or concentrations should be determined by the scientist.	
Positive Control	HeLa	

### Properties

Form	Liquid
Purification	Purification with Protein A and immunogen peptide.
Buffer	PBS and 0.09% (W/V) Sodium azide
Preservative	0.09% (W/V) Sodium azide
Storage instruction	For continuous use, store undiluted antibody at 2-8°C for up to a week. For long-term storage, aliquot and store at -20°C or below. Storage in frost free freezers is not recommended. Avoid repeated freeze/thaw cycles. Suggest spin the vial prior to opening. The antibody solution should be gently mixed before use.
Note	For laboratory research only, not for drug, diagnostic or other use.

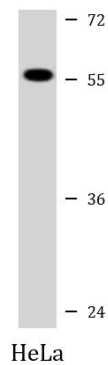
### Bioinformation

Database links	<a href="#">GeneID: 2627 Human</a>
----------------	------------------------------------

Gene Symbol	GATA6
Gene Full Name	GATA binding protein 6
Background	This gene is a member of a small family of zinc finger transcription factors that play an important role in the regulation of cellular differentiation and organogenesis during vertebrate development. This gene is expressed during early embryogenesis and localizes to endo- and mesodermally derived cells during later embryogenesis and thereby plays an important role in gut, lung, and heart development. Mutations in this gene are associated with several congenital defects. [provided by RefSeq, Mar 2012]
Function	Transcriptional activator that regulates SEMA3C and PLXNA2. Thought to be important for regulating terminal differentiation and/or proliferation. Involved in gene regulation specifically in the gastric epithelium. Involved in bone morphogenetic protein (BMP)-mediated cardiac-specific gene expression. Binds to BMP response element (BMPRE) DNA sequences within cardiac activating regions (By similarity). [UniProt]
Research Area	Cancer antibody; Cell Biology and Cellular Response antibody; Controls and Markers antibody; Developmental Biology antibody; Gene Regulation antibody
Calculated Mw	60 kDa
Cellular Localization	Nucleus.

## Images

---



ARG55585 anti-GATA6 antibody WB image

Western blot: 20 µg of HeLa cell lysate stained with ARG55585 anti-GATA6 antibody at 1:1000 dilution.