

ARG55577 anti-EREG antibody

Package: 100 µl
Store at: -20°C

Summary

Product Description	Rabbit Polyclonal antibody recognizes EREG
Tested Reactivity	Hu
Tested Application	FACS, IHC-P, WB
Host	Rabbit
Clonality	Polyclonal
Isotype	IgG
Target Name	EREG
Species	Human
Immunogen	KLH-conjugated synthetic peptide corresponding to aa. 137-165 (C-terminus) of Human EREG.
Conjugation	Un-conjugated
Alternate Names	Proepiregulin; EPR; Ep; ER

Application Instructions

Application table	Application	Dilution
	FACS	1:10 - 1:50
	IHC-P	1:10 - 1:50
	WB	1:1000
Application Note	* The dilutions indicate recommended starting dilutions and the optimal dilutions or concentrations should be determined by the scientist.	
Positive Control	HepG2	

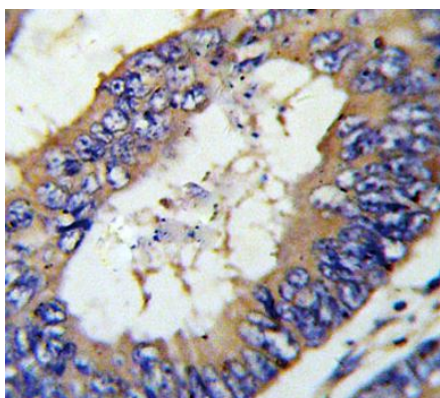
Properties

Form	Liquid
Purification	Purification with Protein A and immunogen peptide.
Buffer	PBS and 0.09% (W/V) Sodium azide
Preservative	0.09% (W/V) Sodium azide
Storage instruction	For continuous use, store undiluted antibody at 2-8°C for up to a week. For long-term storage, aliquot and store at -20°C or below. Storage in frost free freezers is not recommended. Avoid repeated freeze/thaw cycles. Suggest spin the vial prior to opening. The antibody solution should be gently mixed before use.
Note	For laboratory research only, not for drug, diagnostic or other use.

Bioinformation

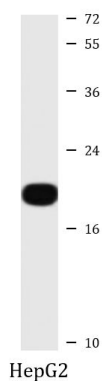
Database links	GeneID: 2069 Human Swiss-port # O14944 Human
Gene Symbol	EREG
Gene Full Name	epiregulin
Background	This gene encodes a secreted peptide hormone and member of the epidermal growth factor (EGF) family of proteins. The encoded protein is a ligand of the epidermal growth factor receptor (EGFR) and the structurally related erb-b2 receptor tyrosine kinase 4 (ERBB4). The encoded protein may be involved in a wide range of biological processes including inflammation, wound healing, oocyte maturation, and cell proliferation. Additionally, the encoded protein may promote the progression of cancers of various human tissues. [provided by RefSeq, Jul 2015]
Function	Ligand of the EGF receptor/EGFR and ERBB4. May be a mediator of localized cell proliferation. As a mitogen it may stimulate cell proliferation and/or angiogenesis. [UniProt]
Research Area	Cancer antibody; Signaling Transduction antibody
Calculated Mw	19 kDa
Cellular Localization	Epiregulin: Secreted, extracellular space.

Images



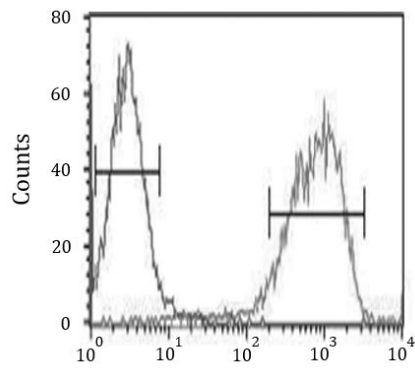
ARG55577 anti-EREG antibody IHC-P image

Immunohistochemistry: Formalin-fixed and paraffin-embedded colon carcinoma stained with ARG55577 anti-EREG antibody.



ARG55577 anti-EREG antibody WB image

Western blot: 20 µg of HepG2 cell lysate stained with ARG55577 anti-EREG antibody at 1:1000 dilution.



ARG55577 anti-EREg antibody FACS image

Flow Cytometry: HepG2 cells stained with ARG55577 anti-EREg antibody (right histogram) or without primary antibody as control (left histogram), followed by incubation with FITC labelled secondary antibody.