

ARG55555 anti-Annexin A1 antibody [794CT2.2.1]

Package: 50 µl
Store at: -20°C

Summary

Product Description	Mouse Monoclonal antibody recognizes Annexin A1
Tested Reactivity	Hu
Tested Application	WB
Host	Mouse
Clonality	Monoclonal
Clone	794CT2.2.1
Isotype	IgG1
Target Name	Annexin A1
Species	Human
Immunogen	Purified His-tagged Human Annexin A1 protein.
Conjugation	Un-conjugated
Alternate Names	ANX1; Calpactin II; Phospholipase A2 inhibitory protein; Chromobindin-9; LPC1; Annexin-1; Annexin A1; Lipocortin I; Annexin I; p35; Calpactin-2

Application Instructions

Application table	<table> <tr> <th>Application</th><th>Dilution</th></tr> <tr> <td>WB</td><td>1:1000 - 1:8000</td></tr> </table>	Application	Dilution	WB	1:1000 - 1:8000
Application	Dilution				
WB	1:1000 - 1:8000				
Application Note	* The dilutions indicate recommended starting dilutions and the optimal dilutions or concentrations should be determined by the scientist.				
Positive Control	HeLa				

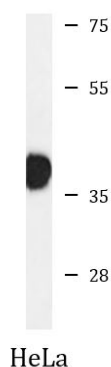
Properties

Form	Liquid
Buffer	Crude Ascites and 0.09% (W/V) Sodium azide
Preservative	0.09% (W/V) Sodium azide
Storage instruction	For continuous use, store undiluted antibody at 2-8°C for up to a week. For long-term storage, aliquot and store at -20°C or below. Storage in frost free freezers is not recommended. Avoid repeated freeze/thaw cycles. Suggest spin the vial prior to opening. The antibody solution should be gently mixed before use.
Note	For laboratory research only, not for drug, diagnostic or other use.

Bioinformation

Database links	GeneID: 301 Human Swiss-port # P04083 Human
Gene Symbol	ANXA1
Gene Full Name	annexin A1
Background	This gene encodes a membrane-localized protein that binds phospholipids. This protein inhibits phospholipase A2 and has anti-inflammatory activity. Loss of function or expression of this gene has been detected in multiple tumors. [provided by RefSeq, Dec 2014]
Function	Calcium/phospholipid-binding protein which promotes membrane fusion and is involved in exocytosis. This protein regulates phospholipase A2 activity. It seems to bind from two to four calcium ions with high affinity. [UniProt]
Research Area	Signaling Transduction antibody
Calculated Mw	39 kDa
PTM	Phosphorylated by protein kinase C, EGFR and TRPM7 (PubMed:2457390, PubMed:15485879). Phosphorylated in response to EGF treatment (PubMed:2532504). Sumoylated.
Cellular Localization	Nucleus. Cytoplasm. Cell projection, cilium. Basolateral cell membrane. Note=Found in the cilium, nucleus and basolateral cell membrane of ciliated cells in the tracheal endothelium. Found in the cytoplasm of type II pneumocytes and alveolar macrophages.

Images



ARG55555 anti-Annexin A1 antibody WB image

Western blot: 35 µg of HeLa cell lysate stained with ARG55555 anti-Annexin A1 antibody.