

ARG55549 anti-Islet 1 antibody

Package: 100 µl
Store at: -20°C

Summary

Product Description	Rabbit Polyclonal antibody recognizes Islet 1
Tested Reactivity	Hu, Ms, Rat
Tested Application	WB
Host	Rabbit
Clonality	Polyclonal
Isotype	IgG
Target Name	Islet 1
Species	Human
Immunogen	Recombinant protein of Human Islet-1 (NP_002193.2).
Conjugation	Un-conjugated
Alternate Names	ISL1; ISL LIM Homeobox 1; ISLET1; Isl-1; Insulin Gene Enhancer Protein ISL-1; Islet-1; ISL1 Transcription Factor, LIM/Homeodomain, (Islet-1)

Application Instructions

Application table	Application	Dilution
	WB	1:500 - 1:2000
Application Note	* The dilutions indicate recommended starting dilutions and the optimal dilutions or concentrations should be determined by the scientist.	
Positive Control	Mouse thymus	

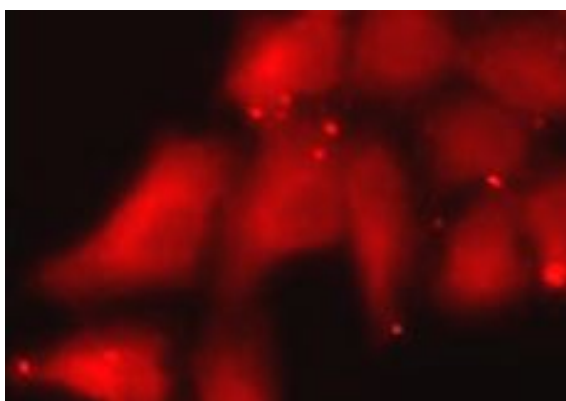
Properties

Form	Liquid
Purification	Affinity purification with immunogen.
Buffer	PBS (pH 7.3), 0.02% Sodium azide and 50% Glycerol
Preservative	0.02% Sodium azide
Stabilizer	50% Glycerol
Storage instruction	For continuous use, store undiluted antibody at 2-8°C for up to a week. For long-term storage, aliquot and store at -20°C. Storage in frost free freezers is not recommended. Avoid repeated freeze/thaw cycles. Suggest spin the vial prior to opening. The antibody solution should be gently mixed before use.
Note	For laboratory research only, not for drug, diagnostic or other use.

Bioinformation

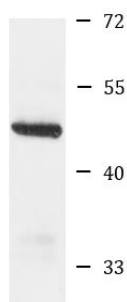
Gene Symbol	ISL1
Gene Full Name	ISL LIM homeobox 1
Background	This gene encodes a member of the LIM/homeodomain family of transcription factors. The encoded protein binds to the enhancer region of the insulin gene, among others, and may play an important role in regulating insulin gene expression. The encoded protein is central to the development of pancreatic cell lineages and may also be required for motor neuron generation. Mutations in this gene have been associated with maturity-onset diabetes of the young.
Function	DNA-binding transcriptional activator. Recognizes and binds to the consensus octamer binding site 5'-ATAATTAA-3' in promoter of target genes. Plays a fundamental role in the gene regulatory network essential for retinal ganglion cell (RGC) differentiation. Cooperates with the transcription factor POU4F2 to achieve maximal levels of expression of RGC target genes and RGC fate specification in the developing retina. Involved in the specification of motor neurons in cooperation with LHX3 and LDB1 (By similarity).
Research Area	Cell Biology and Cellular Response antibody; Controls and Markers antibody; Developmental Biology antibody; Neuroscience antibody
Calculated Mw	39 kDa
PTM	Phosphoprotein, Ubl conjugation
Cellular Localization	Nucleus

Images



ARG55549 anti-Islet 1 antibody ICC/IF image

Immunofluorescence: A549 cells stained with ARG55549 anti-Islet 1 antibody.



Mouse thymus

ARG55549 anti-Islet 1 antibody WB image

Western blot: Mouse thymus lysate stained with ARG55549 anti-Islet 1 antibody.