

## ARG55547 anti-HES1 antibody

Package: 100 µl  
Store at: -20°C

### Summary

Product Description	Rabbit Polyclonal antibody recognizes HES1
Tested Reactivity	Hu
Tested Application	WB
Host	Rabbit
Clonality	Polyclonal
Isotype	IgG
Target Name	HES1
Species	Human
Immunogen	KLH-conjugated synthetic peptide corresponding to aa. 259-293 (C-terminus) of Human HES1.
Conjugation	Un-conjugated
Alternate Names	Class B basic helix-loop-helix protein 39; HRY; Transcription factor HES-1; Hairy and enhancer of split 1; Hairy homolog; Hairy-like protein; HES-1; hHL; bHLHb39; HHL

### Application Instructions

Application table	Application	Dilution
	WB	1:1000
Application Note	* The dilutions indicate recommended starting dilutions and the optimal dilutions or concentrations should be determined by the scientist.	
Positive Control	SH-SY5Y	

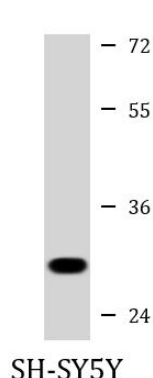
### Properties

Form	Liquid
Purification	Purification with Protein A and immunogen peptide.
Buffer	PBS and 0.09% (W/V) Sodium azide
Preservative	0.09% (W/V) Sodium azide
Storage instruction	For continuous use, store undiluted antibody at 2-8°C for up to a week. For long-term storage, aliquot and store at -20°C or below. Storage in frost free freezers is not recommended. Avoid repeated freeze/thaw cycles. Suggest spin the vial prior to opening. The antibody solution should be gently mixed before use.
Note	For laboratory research only, not for drug, diagnostic or other use.

### Bioinformation

Database links	<a href="#">GeneID: 3280 Human</a> <a href="#">Swiss-port # Q14469 Human</a>
Gene Symbol	HES1
Gene Full Name	hes family bHLH transcription factor 1
Background	This protein belongs to the basic helix-loop-helix family of transcription factors. It is a transcriptional repressor of genes that require a bHLH protein for their transcription. The protein has a particular type of basic domain that contains a helix interrupting protein that binds to the N-box rather than the canonical E-box. [provided by RefSeq, Jul 2008]
Function	Transcriptional repressor of genes that require a bHLH protein for their transcription. May act as a negative regulator of myogenesis by inhibiting the functions of MYOD1 and ASH1. Binds DNA on N-box motifs: 5'-CACNAG-3' with high affinity and on E-box motifs: 5'-CANNTG-3' with low affinity (By similarity). May play a role in a functional FA core complex response to DNA cross-link damage, being required for the stability and nuclear localization of FA core complex proteins, as well as for FANCD2 monoubiquitination in response to DNA damage. [UniProt]
Research Area	Gene Regulation antibody; Neuroscience antibody
Calculated Mw	30 kDa
Cellular Localization	Nucleus.

## Images



ARG55547 anti-HES1 antibody WB image

Western blot: 20 µg of SH-SY5Y cell lysate stained with ARG55547 anti-HES1 antibody at 1:1000 dilution.