

## ARG55530 anti-SHMT1 antibody

Package: 100 µl  
Store at: -20°C

### Summary

Product Description	Rabbit Polyclonal antibody recognizes SHMT1
Tested Reactivity	Hu
Predict Reactivity	Bov
Tested Application	IHC-P, WB
Host	Rabbit
Clonality	Polyclonal
Isotype	IgG
Target Name	SHMT1
Species	Human
Immunogen	KLH-conjugated synthetic peptide corresponding to aa. 19-47 (N-terminus) of Human SHMT1.
Conjugation	Un-conjugated
Alternate Names	EC 2.1.2.1; SHMT; CSHMT; Serine methylase; Glycine hydroxymethyltransferase; Serine hydroxymethyltransferase, cytosolic

### Application Instructions

Application table	Application	Dilution
	IHC-P	1:10 - 1:50
	WB	1:1000
Application Note	* The dilutions indicate recommended starting dilutions and the optimal dilutions or concentrations should be determined by the scientist.	
Positive Control	293	

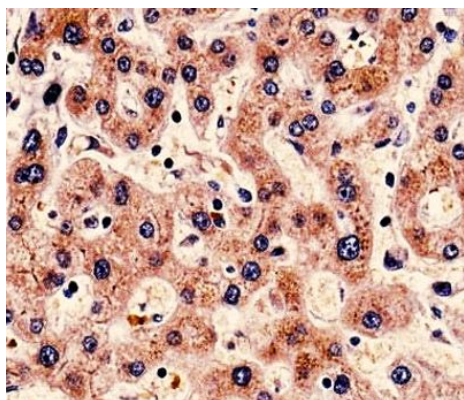
### Properties

Form	Liquid
Purification	Purification with Protein A and immunogen peptide
Buffer	PBS and 0.09% (W/V) Sodium azide
Preservative	0.09% (W/V) Sodium azide
Storage instruction	For continuous use, store undiluted antibody at 2-8°C for up to a week. For long-term storage, aliquot and store at -20°C or below. Storage in frost free freezers is not recommended. Avoid repeated freeze/thaw cycles. Suggest spin the vial prior to opening. The antibody solution should be gently mixed before use.
Note	For laboratory research only, not for drug, diagnostic or other use.

## Bioinformation

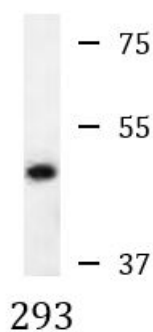
Database links	<a href="#">GeneID: 6470 Human</a> <a href="#">Swiss-port # P34896 Human</a>
Gene Symbol	SHMT1
Gene Full Name	serine hydroxymethyltransferase 1 (soluble)
Background	This gene encodes the cytosolic form of serine hydroxymethyltransferase, a pyridoxal phosphate-containing enzyme that catalyzes the reversible conversion of serine and tetrahydrofolate to glycine and 5,10-methylene tetrahydrofolate. This reaction provides one-carbon units for synthesis of methionine, thymidylate, and purines in the cytoplasm. This gene is located within the Smith-Magenis syndrome region on chromosome 17. A pseudogene of this gene is located on the short arm of chromosome 1. Alternative splicing results in multiple transcript variants. [provided by RefSeq, Aug 2013]
Function	Interconversion of serine and glycine. [UniProt]
Research Area	Metabolism antibody; Signaling Transduction antibody
Calculated Mw	53 kDa

## Images



ARG55530 anti-SHMT1 antibody IHC-P image

Immunohistochemistry: Formalin-fixed and paraffin-embedded Human liver tissue stained with ARG55530 anti-SHMT1 antibody.



ARG55530 anti-SHMT1 antibody WB image

Western blot: 35 µg of 293 cell lysate stained with ARG55530 anti-SHMT1 antibody.