

ARG55495 anti-Pyruvate Carboxylase antibody

Package: 100 µl
Store at: -20°C

Summary

Product Description	Rabbit Polyclonal antibody recognizes Pyruvate Carboxylase
Tested Reactivity	Hu, Ms, Rat
Tested Application	ICC/IF, IP, WB
Host	Rabbit
Clonality	Polyclonal
Isotype	IgG
Target Name	Pyruvate Carboxylase
Species	Human
Immunogen	Recombinant protein of Human PC
Conjugation	Un-conjugated
Alternate Names	PCB; Pyruvic carboxylase; EC 6.4.1.1; Pyruvate carboxylase, mitochondrial

Application Instructions

Application table	Application	Dilution
	ICC/IF	1:10 - 1:100
	IP	Assay-dependent
	WB	1:500 - 1:2000
Application Note	* The dilutions indicate recommended starting dilutions and the optimal dilutions or concentrations should be determined by the scientist.	
Positive Control	A549	
Observed Size	~ 129 kDa	

Properties

Form	Liquid
Purification	Affinity purification with immunogen.
Buffer	PBS (pH 7.3), 0.02% Sodium azide and 50% Glycerol
Preservative	0.02% Sodium azide
Stabilizer	50% Glycerol
Storage instruction	For continuous use, store undiluted antibody at 2-8°C for up to a week. For long-term storage, aliquot and store at -20°C. Storage in frost free freezers is not recommended. Avoid repeated freeze/thaw cycles. Suggest spin the vial prior to opening. The antibody solution should be gently mixed before use.

Note

For laboratory research only, not for drug, diagnostic or other use.

Bioinformation

Database links

[GeneID: 25104 Rat](#)

[GeneID: 5091 Human](#)

[Swiss-port # P11498 Human](#)

[Swiss-port # P52873 Rat](#)

Gene Symbol

PC

Gene Full Name

pyruvate carboxylase

Background

This gene encodes pyruvate carboxylase, which requires biotin and ATP to catalyse the carboxylation of pyruvate to oxaloacetate. The active enzyme is a homotetramer arranged in a tetrahedron which is located exclusively in the mitochondrial matrix. Pyruvate carboxylase is involved in gluconeogenesis, lipogenesis, insulin secretion and synthesis of the neurotransmitter glutamate. Mutations in this gene have been associated with pyruvate carboxylase deficiency. Alternatively spliced transcript variants with different 5' UTRs, but encoding the same protein, have been found for this gene. [provided by RefSeq, Jul 2008]

Function

Pyruvate carboxylase catalyzes a 2-step reaction, involving the ATP-dependent carboxylation of the covalently attached biotin in the first step and the transfer of the carboxyl group to pyruvate in the second. Catalyzes in a tissue specific manner, the initial reactions of glucose (liver, kidney) and lipid (adipose tissue, liver, brain) synthesis from pyruvate. [UniProt]

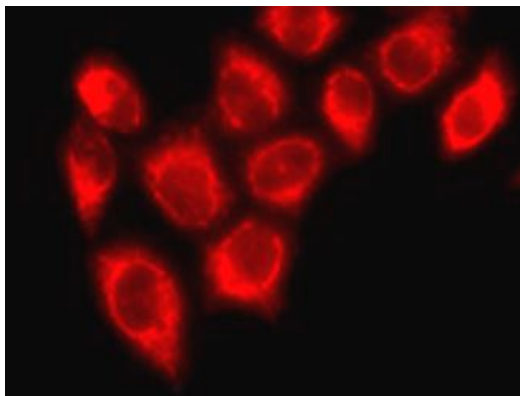
Research Area

Cancer antibody; Metabolism antibody; Signaling Transduction antibody

Calculated Mw

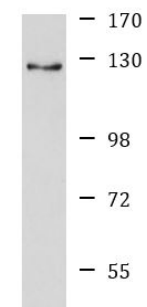
130 kDa

Images



ARG55495 anti-Pyruvate Carboxylase antibody ICC/IF image

Immunofluorescence: U2OS cells stained with ARG55495 anti-Pyruvate Carboxylase antibody.



A549

ARG55495 anti-Pyruvate Carboxylase antibody WB image

Western blot: A549 cell lysate stained with ARG55495 anti-Pyruvate Carboxylase antibody.