

ARG55492 anti-PAI1 / SERPINE1 antibody

Package: 100 µl
Store at: -20°C

Summary

Product Description	Rabbit Polyclonal antibody recognizes PAI1 / SERPINE1
Tested Reactivity	Hu, Ms, Rat
Tested Application	ICC/IF, WB
Host	Rabbit
Clonality	Polyclonal
Isotype	IgG
Target Name	PAI1 / SERPINE1
Species	Human
Immunogen	Recombinant protein of Human SERPINE1 (NP_000593.1)
Conjugation	Un-conjugated
Alternate Names	Serpin E1; PLANH1; Endothelial plasminogen activator inhibitor; Plasminogen activator inhibitor 1; PAI; PAI1; PAI-1

Application Instructions

Predict Reactivity Note	Mouse, Rat						
Application table	<table> <tr> <th>Application</th><th>Dilution</th></tr> <tr> <td>ICC/IF</td><td>1:50 - 1:200</td></tr> <tr> <td>WB</td><td>1:500 - 1:2000</td></tr> </table>	Application	Dilution	ICC/IF	1:50 - 1:200	WB	1:500 - 1:2000
Application	Dilution						
ICC/IF	1:50 - 1:200						
WB	1:500 - 1:2000						
Application Note	* The dilutions indicate recommended starting dilutions and the optimal dilutions or concentrations should be determined by the scientist.						
Positive Control	A549						

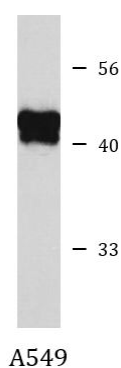
Properties

Form	Liquid
Purification	Affinity purification with immunogen.
Buffer	PBS (pH 7.3), 0.02% Sodium azide and 50% Glycerol
Preservative	0.02% Sodium azide
Stabilizer	50% Glycerol
Storage instruction	For continuous use, store undiluted antibody at 2-8°C for up to a week. For long-term storage, aliquot and store at -20°C. Storage in frost free freezers is not recommended. Avoid repeated freeze/thaw cycles. Suggest spin the vial prior to opening. The antibody solution should be gently mixed before use.
Note	For laboratory research only, not for drug, diagnostic or other use.

Bioinformation

Database links	GeneID: 24617 Rat GeneID: 5054 Human Swiss-port # P05121 Human Swiss-port # P20961 Rat
Gene Symbol	SERPINE1
Gene Full Name	serpin peptidase inhibitor, clade E (nexin, plasminogen activator inhibitor type 1), member 1
Background	This gene encodes a member of the serine proteinase inhibitor (serpin) superfamily. This member is the principal inhibitor of tissue plasminogen activator (tPA) and urokinase (uPA), and hence is an inhibitor of fibrinolysis. Defects in this gene are the cause of plasminogen activator inhibitor-1 deficiency (PAI-1 deficiency), and high concentrations of the gene product are associated with thrombophilia. Alternatively spliced transcript variants encoding different isoforms have been found for this gene. [provided by RefSeq, Sep 2009]
Function	Serine protease inhibitor. This inhibitor acts as 'bait' for tissue plasminogen activator, urokinase, protein C and matriptase-3/TMPRSS7. Its rapid interaction with PLAT may function as a major control point in the regulation of fibrinolysis. [UniProt]
Research Area	Cancer antibody; Cell Biology and Cellular Response antibody; Metabolism antibody
Calculated Mw	45 kDa
PTM	Inactivated by proteolytic attack of the urokinase-type (u-PA) and the tissue-type (TPA), cleaving the 369-Arg- -Met-370 bond.

Images



ARG55492 anti-PAI1 / SERPINE1 antibody WB image

Western blot: A549 cell lysate stained with ARG55492 anti-PAI1 / SERPINE1 antibody.