

ARG55490 anti-PGRMC1 / MPR antibody

Package: 100 µl
Store at: -20°C

Summary

Product Description	Rabbit Polyclonal antibody recognizes PGRMC1 / MPR
Tested Reactivity	Hu, Ms, Rat
Tested Application	ICC/IF, IHC-P, WB
Host	Rabbit
Clonality	Polyclonal
Isotype	IgG
Target Name	PGRMC1 / MPR
Species	Human
Immunogen	Recombinant protein of Human PGRMC1
Conjugation	Un-conjugated
Alternate Names	mPR; HPR6.6; MPR; Membrane-associated progesterone receptor component 1

Application Instructions

Predict Reactivity Note	Rat								
Application table	<table> <tr> <th>Application</th><th>Dilution</th></tr> <tr> <td>ICC/IF</td><td>1:50 - 1:200</td></tr> <tr> <td>IHC-P</td><td>1:50 - 1:200</td></tr> <tr> <td>WB</td><td>1:500 - 1:2000</td></tr> </table>	Application	Dilution	ICC/IF	1:50 - 1:200	IHC-P	1:50 - 1:200	WB	1:500 - 1:2000
Application	Dilution								
ICC/IF	1:50 - 1:200								
IHC-P	1:50 - 1:200								
WB	1:500 - 1:2000								
Application Note	* The dilutions indicate recommended starting dilutions and the optimal dilutions or concentrations should be determined by the scientist.								
Positive Control	OVCA8								
Observed Size	~ 24 kDa								

Properties

Form	Liquid
Purification	Affinity purification with immunogen.
Buffer	PBS (pH 7.3), 0.02% Sodium azide and 50% Glycerol
Preservative	0.02% Sodium azide
Stabilizer	50% Glycerol
Storage instruction	For continuous use, store undiluted antibody at 2-8°C for up to a week. For long-term storage, aliquot and store at -20°C. Storage in frost free freezers is not recommended. Avoid repeated freeze/thaw cycles. Suggest spin the vial prior to opening. The antibody solution should be gently mixed before use.

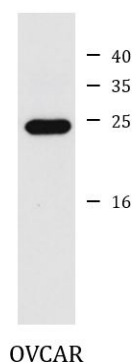
Note

For laboratory research only, not for drug, diagnostic or other use.

Bioinformation

Gene Symbol	PGRMC1
Gene Full Name	progesterone receptor membrane component 1
Background	This gene encodes a putative membrane-associated progesterone steroid receptor. The protein is expressed predominantly in the liver and kidney. [provided by RefSeq, Mar 2010]
Function	Receptor for progesterone. [UniProt]
Research Area	Cancer antibody; Cell Biology and Cellular Response antibody; Signaling Transduction antibody
Calculated Mw	22 kDa

Images



ARG55490 anti-PGRMC1 / MPR antibody WB image

Western blot: OVCAR cell lysate stained with ARG55490 anti-PGRMC1 / MPR antibody.