

## ARG55476 anti-PSMA4 antibody

Package: 100 µl  
Store at: -20°C

### Summary

Product Description	Rabbit Polyclonal antibody recognizes PSMA4
Tested Reactivity	Hu, Ms, Rat
Tested Application	ICC/IF, IP, WB
Host	Rabbit
Clonality	Polyclonal
Isotype	IgG
Target Name	PSMA4
Species	Human
Immunogen	Recombinant protein of Human PSMA4
Conjugation	Un-conjugated
Alternate Names	Proteasome component C9; PSC9; Proteasome subunit alpha type-4; HC9; Proteasome subunit L; HsT17706; Multicatalytic endopeptidase complex subunit C9; Macropain subunit C9; EC 3.4.25.1

### Application Instructions

Application table	Application	Dilution
	ICC/IF	1:50 - 1:200
	IP	Assay-dependent
	WB	1:500 - 1:2000
Application Note	* The dilutions indicate recommended starting dilutions and the optimal dilutions or concentrations should be determined by the scientist.	
Positive Control	Jurkat, Mouse liver and PC-12	
Observed Size	~ 30 kDa	

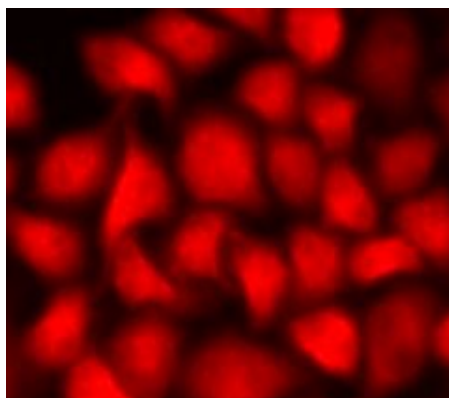
### Properties

Form	Liquid
Purification	Affinity purification with immunogen.
Buffer	PBS (pH 7.3), 0.02% Sodium azide and 50% Glycerol
Preservative	0.02% Sodium azide
Stabilizer	50% Glycerol
Storage instruction	For continuous use, store undiluted antibody at 2-8°C for up to a week. For long-term storage, aliquot and store at -20°C. Storage in frost free freezers is not recommended. Avoid repeated freeze/thaw cycles. Suggest spin the vial prior to opening. The antibody solution should be gently mixed before use.

## Bioinformation

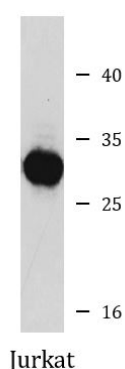
Gene Symbol	PSMA4
Gene Full Name	proteasome (prosome, macropain) subunit, alpha type, 4
Background	The proteasome is a multicatalytic proteinase complex with a highly ordered ring-shaped 20S core structure. The core structure is composed of 4 rings of 28 non-identical subunits; 2 rings are composed of 7 alpha subunits and 2 rings are composed of 7 beta subunits. Proteasomes are distributed throughout eukaryotic cells at a high concentration and cleave peptides in an ATP/ubiquitin-dependent process in a non-lysosomal pathway. An essential function of a modified proteasome, the immunoproteasome, is the processing of class I MHC peptides. This gene encodes a member of the peptidase T1A family, that is a 20S core alpha subunit. Three alternatively spliced transcript variants encoding different isoforms have been found for this gene. [provided by RefSeq, Jul 2008]
Function	The proteasome is a multicatalytic proteinase complex which is characterized by its ability to cleave peptides with Arg, Phe, Tyr, Leu, and Glu adjacent to the leaving group at neutral or slightly basic pH. The proteasome has an ATP-dependent proteolytic activity. [UniProt]
Research Area	Cell Biology and Cellular Response antibody
Calculated Mw	29 kDa

## Images



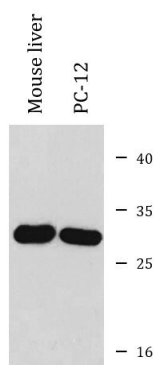
ARG55476 anti-PSMA4 antibody ICC/IF image

Immunofluorescence: U2OS cells stained with ARG55476 anti-PSMA4 antibody.



ARG55476 anti-PSMA4 antibody WB image

Western blot: Jurkat cell lysate stained with ARG55476 anti-PSMA4 antibody.



#### ARG55476 anti-PSMA4 antibody WB image

Western blot: Mouse liver and PC-12 cell lysates stained with ARG55476 anti-PSMA4 antibody.