

ARG55428 anti-RPS19 antibody

Package: 100 µl
Store at: -20°C

Summary

Product Description	Rabbit Polyclonal antibody recognizes RPS19
Tested Reactivity	Hu
Predict Reactivity	Ms, Rat, Bov
Tested Application	FACS, WB
Host	Rabbit
Clonality	Polyclonal
Isotype	IgG
Target Name	RPS19
Species	Human
Immunogen	KLH-conjugated synthetic peptide corresponding to aa. 25-54 (Center) of Human RPS19.
Conjugation	Un-conjugated
Alternate Names	DBA; 40S ribosomal protein S19; S19; DBA1

Application Instructions

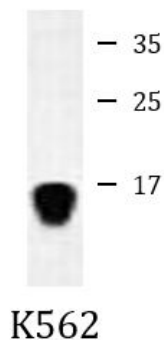
Application table	Application	Dilution
	FACS	1:10 - 1:50
	WB	1:1000
Application Note	* The dilutions indicate recommended starting dilutions and the optimal dilutions or concentrations should be determined by the scientist.	
Positive Control	K562	

Properties

Form	Liquid
Purification	Purification with Protein A and immunogen peptide.
Buffer	PBS and 0.09% (W/V) Sodium azide
Preservative	0.09% (W/V) Sodium azide
Storage instruction	For continuous use, store undiluted antibody at 2-8°C for up to a week. For long-term storage, aliquot and store at -20°C or below. Storage in frost free freezers is not recommended. Avoid repeated freeze/thaw cycles. Suggest spin the vial prior to opening. The antibody solution should be gently mixed before use.
Note	For laboratory research only, not for drug, diagnostic or other use.

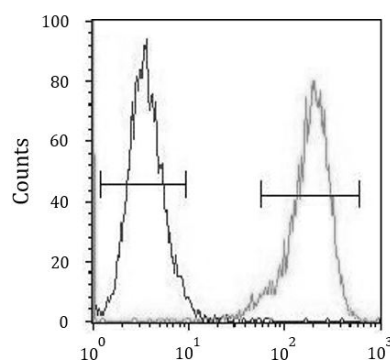
Database links	GeneID: 6223 Human Swiss-port # P39019 Human
Gene Symbol	RPS19
Gene Full Name	ribosomal protein S19
Background	<p>Ribosomes, the organelles that catalyze protein synthesis, consist of a small 40S subunit and a large 60S subunit. Together these subunits are composed of 4 RNA species and approximately 80 structurally distinct proteins. This gene encodes a ribosomal protein that is a component of the 40S subunit. The protein belongs to the S19E family of ribosomal proteins. It is located in the cytoplasm. Mutations in this gene cause Diamond-Blackfan anemia (DBA), a constitutional erythroblastopenia characterized by absent or decreased erythroid precursors, in a subset of patients. This suggests a possible extra-ribosomal function for this gene in erythropoietic differentiation and proliferation, in addition to its ribosomal function. Higher expression levels of this gene in some primary colon carcinomas compared to matched normal colon tissues has been observed. As is typical for genes encoding ribosomal proteins, there are multiple processed pseudogenes of this gene dispersed through the genome. [provided by RefSeq, Jul 2008]</p>
Function	Required for pre-rRNA processing and maturation of 40S ribosomal subunits. [UniProt]
Research Area	Gene Regulation antibody
Calculated Mw	16 kDa
Cellular Localization	Nucleus. Note=Located more specifically in the nucleoli

Images



ARG55428 anti-RPS19 antibody WB image

Western blot: 35 µg of K562 cell lysate stained with ARG55428 anti-RPS19 antibody.



ARG55428 anti-RPS19 antibody FACS image

Flow Cytometry: K562 cells stained with ARG55428 anti-RPS19 antibody (right histogram) or without primary antibody control (left histogram), followed by incubation with FITC labelled secondary antibody.