

ARG55391 anti-GHSR / Ghrelin Receptor antibody

Package: 100 µl
Store at: -20°C

Summary

Product Description	Rabbit Polyclonal antibody recognizes GHSR / Ghrelin Receptor
Tested Reactivity	Hu, Ms
Predict Reactivity	Pig, Rb
Tested Application	IHC-P, WB
Host	Rabbit
Clonality	Polyclonal
Isotype	IgG
Target Name	GHSR / Ghrelin Receptor
Species	Human
Immunogen	KLH-conjugated synthetic peptide corresponding to aa. 326-357 (C-terminus) of Human GHSR.
Conjugation	Un-conjugated
Alternate Names	GHDP; Growth hormone secretagogue receptor type 1; GHS-R; GH-releasing peptide receptor; GHRP; Ghrelin receptor

Application Instructions

Application table	Application	Dilution
	IHC-P	1:50 - 1:100
	WB	1:1000
Application Note	* The dilutions indicate recommended starting dilutions and the optimal dilutions or concentrations should be determined by the scientist.	
Positive Control	Mouse bladder	

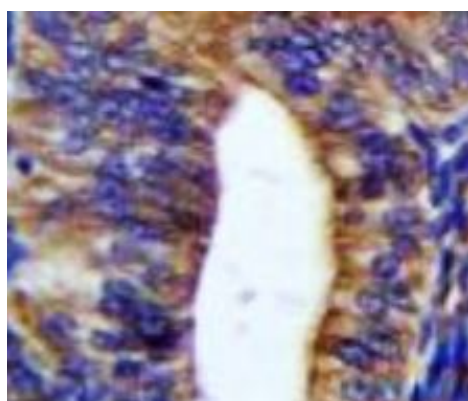
Properties

Form	Liquid
Purification	Purification with Protein A and immunogen peptide
Buffer	PBS and 0.09% (W/V) Sodium azide
Preservative	0.09% (W/V) Sodium azide
Storage instruction	For continuous use, store undiluted antibody at 2-8°C for up to a week. For long-term storage, aliquot and store at -20°C or below. Storage in frost free freezers is not recommended. Avoid repeated freeze/thaw cycles. Suggest spin the vial prior to opening. The antibody solution should be gently mixed before use.
Note	For laboratory research only, not for drug, diagnostic or other use.

Bioinformation

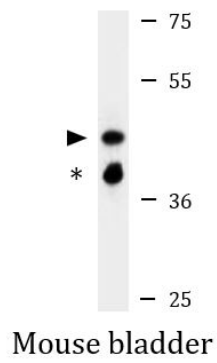
Database links	GeneID: 208188 Mouse GeneID: 2693 Human Swiss-port # Q92847 Human Swiss-port # Q99P50 Mouse
Gene Symbol	GHSR
Gene Full Name	growth hormone secretagogue receptor
Background	This gene encodes a member of the G-protein coupled receptor family. The encoded protein may play a role in energy homeostasis and regulation of body weight. Two identified transcript variants are expressed in several tissues and are evolutionary conserved in fish and swine. One transcript, 1a, excises an intron and encodes the functional protein; this protein is the receptor for the Ghrelin ligand and defines a neuroendocrine pathway for growth hormone release. The second transcript (1b) retains the intron and does not function as a receptor for Ghrelin; however, it may function to attenuate activity of isoform 1a. Mutations in this gene are associated with autosomal idiopathic short stature.[provided by RefSeq, Apr 2010]
Function	Receptor for ghrelin, coupled to G-alpha-11 proteins. Stimulates growth hormone secretion. Binds also other growth hormone releasing peptides (GHRP) (e.g. Met-enkephalin and GHRP-6) as well as non-peptide, low molecular weight secretagogues (e.g. L-692,429, MK-0677, adenosine). [UniProt]
Highlight	Related news: Studying obesity and appetite control by quantifying orexigenic and anorexigenic hormones:
Research Area	Metabolism antibody; Neuroscience antibody
Calculated Mw	41 kDa
Cellular Localization	Cell membrane; Multi-pass membrane protein.

Images



ARG55391 anti-GHSR / Ghrelin Receptor antibody IHC-P image

Immunohistochemistry: Formalin-fixed and paraffin-embedded Human uterus tissue stained with ARG55391 anti-GHSR / Ghrelin Receptor antibody.



ARG55391 anti-GHSR / Ghrelin Receptor antibody WB image

Western blot: 35 µg of Mouse bladder lysate stained with ARG55391 anti-GHSR / Ghrelin Receptor antibody.

* Maybe represent the non post-translational modification form of GHSR / Ghrelin Receptor protein.