

## ARG55376 anti-Kallikrein 2 antibody

Package: 100 µl  
Store at: -20°C

### Summary

Product Description	Rabbit Polyclonal antibody recognizes Kallikrein 2
Tested Reactivity	Hu
Tested Application	WB
Host	Rabbit
Clonality	Polyclonal
Isotype	IgG
Target Name	Kallikrein 2
Species	Human
Immunogen	KLH-conjugated synthetic peptide corresponding to aa. 166-197 (C-terminus) of Human Kallikrein 2.
Conjugation	Un-conjugated
Alternate Names	hK2; Tissue kallikrein-2; EC 3.4.21.35; Glandular kallikrein-1; Kallikrein-2; hGK-1; KLK2A2

### Application Instructions

Application table	Application	Dilution
	WB	1:1000
Application Note	* The dilutions indicate recommended starting dilutions and the optimal dilutions or concentrations should be determined by the scientist.	
Positive Control	K562	

### Properties

Form	Liquid
Purification	Purification with Protein A and immunogen peptide.
Buffer	PBS and 0.09% (W/V) Sodium azide
Preservative	0.09% (W/V) Sodium azide
Storage instruction	For continuous use, store undiluted antibody at 2-8°C for up to a week. For long-term storage, aliquot and store at -20°C or below. Storage in frost free freezers is not recommended. Avoid repeated freeze/thaw cycles. Suggest spin the vial prior to opening. The antibody solution should be gently mixed before use.
Note	For laboratory research only, not for drug, diagnostic or other use.

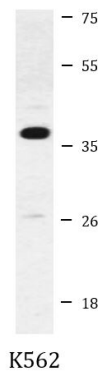
### Bioinformation

Database links	<a href="#">GeneID: 3817 Human</a>
----------------	------------------------------------

Gene Symbol	KLK2
Gene Full Name	kallikrein-related peptidase 2
Background	<p>This gene encodes a member of the grandular kallikrein protein family. Kallikreins are a subgroup of serine proteases that are clustered on chromosome 19. Members of this family are involved in a diverse array of biological functions. The protein encoded by this gene is a highly active trypsin-like serine protease that selectively cleaves at arginine residues. This protein is primarily expressed in prostatic tissue and is responsible for cleaving pro-prostate-specific antigen into its enzymatically active form. This gene is highly expressed in prostate tumor cells and may be a prognostic maker for prostate cancer risk. Alternate splicing results in both coding and non-coding transcript variants. [provided by RefSeq, Jan 2012]</p>
Function	Glandular kallikreins cleave Met-Lys and Arg-Ser bonds in kininogen to release Lys-bradykinin. [UniProt]
Research Area	Cancer antibody; Cell Biology and Cellular Response antibody; Signaling Transduction antibody
Calculated Mw	29 kDa

## Images

---



ARG55376 anti-Kallikrein 2 antibody WB image

Western blot: 35 µg of K562 cell lysate stained with ARG55376 anti-Kallikrein 2 antibody.