

ARG55324 anti-GLUD1 + GLUD2 antibody

Package: 100 µl
Store at: -20°C

Summary

Product Description	Rabbit Polyclonal antibody recognizes GLUD1 + GLUD2
Tested Reactivity	Hu, Ms, Rat
Tested Application	ICC/IF, IHC-P, WB
Specificity	This antibody was designed to react C-terminal of GLUD2 protein and it is expected to recognize both GLUD1 and GLUD2 proteins based on sequence homology analysis result
Host	Rabbit
Clonality	Polyclonal
Isotype	IgG
Target Name	GLUD1 + GLUD2
Species	Human
Immunogen	Recombinant protein corresponding to aa. 319-558 of Human GLUD2 (NP_036216.2)
Conjugation	Un-conjugated
Alternate Names	GDH1; GDH 1; Glutamate dehydrogenase 1, mitochondrial; GDH; GLUD; EC 1.4.1.3; Glutamate dehydrogenase 2, mitochondrial; GLUDP1; EC 1.4.1.3; GDH 2; GDH2

Application Instructions

Application table	Application	Dilution
	ICC/IF	1:50 - 1:200
	IHC-P	1:50 - 1:200
	WB	1:500 - 1:2000
Application Note	* The dilutions indicate recommended starting dilutions and the optimal dilutions or concentrations should be determined by the scientist.	
Positive Control	MCF7	

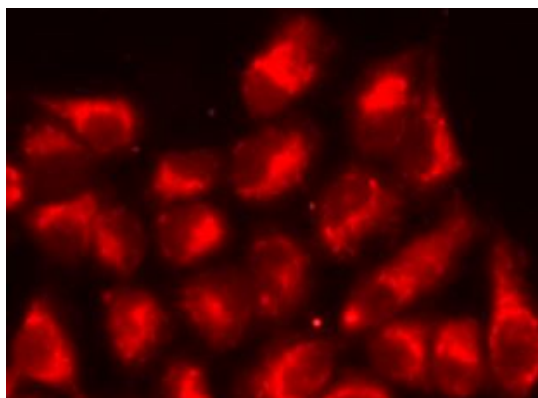
Properties

Form	Liquid
Purification	Affinity purification with immunogen.
Buffer	PBS (pH 7.3), 0.02% Sodium azide and 50% Glycerol
Preservative	0.02% Sodium azide
Stabilizer	50% Glycerol
Storage instruction	For continuous use, store undiluted antibody at 2-8°C for up to a week. For long-term storage, aliquot and store at -20°C. Storage in frost free freezers is not recommended. Avoid repeated freeze/thaw cycles. Suggest spin the vial prior to opening. The antibody solution should be gently mixed before use.

Bioinformation

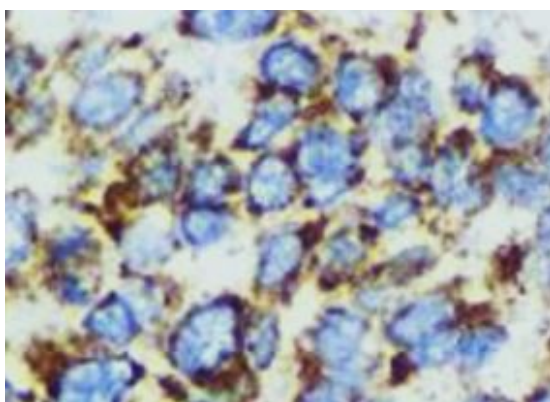
Database links	GeneID: 2747 Human Swiss-port # P49448 Human
Gene Symbol	GLUD2
Gene Full Name	glutamate dehydrogenase 2
Background	The protein encoded by this gene is localized to the mitochondrion and acts as a homohexamer to recycle glutamate during neurotransmission. The encoded enzyme catalyzes the reversible oxidative deamination of glutamate to alpha-ketoglutarate. This gene is intronless.[provided by RefSeq, Jan 2010]
Function	Important for recycling the chief excitatory neurotransmitter, glutamate, during neurotransmission. [UniProt]
Research Area	Cell Biology and Cellular Response antibody; Metabolism antibody; Neuroscience antibody; Signaling Transduction antibody
Calculated Mw	61 kDa
PTM	Stoichiometry shows that ADP-ribosylation occurs in one subunit per catalytically active homohexamer.

Images



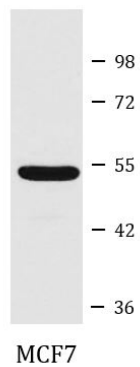
ARG55324 anti-GLUD1 + GLUD2 antibody ICC/IF image

Immunofluorescence: A549 cells stained with ARG55324 anti-GLUD1 + GLUD2 antibody.



ARG55324 anti-GLUD1 + GLUD2 antibody IHC-P image

Immunohistochemistry: Paraffin-embedded Human esophageal cancer tissue stained with ARG55324 anti-GLUD1 + GLUD2 antibody at 1:100 dilution.



ARG55324 anti-GLUD1 + GLUD2 antibody WB image

Western blot: MCF7 cell lysate stained with ARG55324 anti-GLUD1 + GLUD2 antibody.