

ARG55242
anti-Slug antibodyPackage: 100 µl
Store at: -20°C

Summary

Product Description	Rabbit Polyclonal antibody recognizes Slug
Tested Reactivity	Hu, Ms, Rat
Predict Reactivity	Bov
Tested Application	ICC/IF, IHC-P, WB
Host	Rabbit
Clonality	Polyclonal
Isotype	IgG
Target Name	Slug
Species	Human
Immunogen	KLH-conjugated synthetic peptide corresponding to aa. 98-129 (Center) of Human Slug.
Conjugation	Un-conjugated
Alternate Names	Protein snail homolog 2; SNAIL2; WS2D; Neural crest transcription factor Slug; Zinc finger protein SNAI2; SLUG; SLUGH1

Application Instructions

Application table	Application	Dilution
	ICC/IF	1:10 - 1:50
	IHC-P	1:10 - 1:50
	WB	1:1000
Application Note	* The dilutions indicate recommended starting dilutions and the optimal dilutions or concentrations should be determined by the scientist.	
Positive Control	Mouse heart	

Properties

Form	Liquid
Purification	Purification with Protein G.
Buffer	PBS and 0.09% (W/V) Sodium azide
Preservative	0.09% (W/V) Sodium azide
Storage instruction	For continuous use, store undiluted antibody at 2-8°C for up to a week. For long-term storage, aliquot and store at -20°C or below. Storage in frost free freezers is not recommended. Avoid repeated freeze/thaw cycles. Suggest spin the vial prior to opening. The antibody solution should be gently mixed before use.

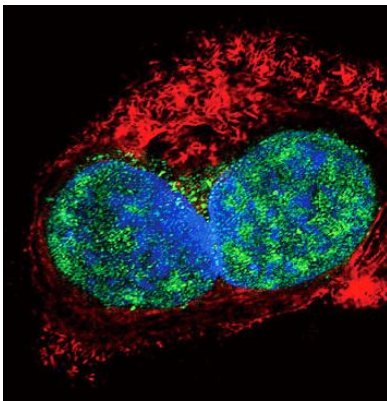
Note

For laboratory research only, not for drug, diagnostic or other use.

Bioinformation

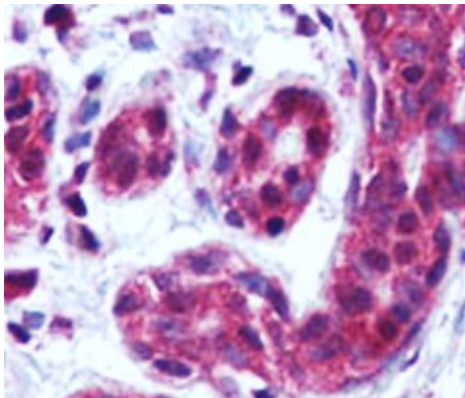
Gene Symbol	SNAI2
Gene Full Name	snail family zinc finger 2
Background	SLUG is a member of the Snail family of C2H2-type zinc finger transcription factors. The encoded protein acts as a transcriptional repressor that binds to E-box motifs and is also likely to repress E-cadherin transcription in breast carcinoma. This protein is involved in epithelial-mesenchymal transitions and has antiapoptotic activity. Mutations in this gene may be associated with sporadic cases of neural tube defects.
Research Area	Cancer antibody; Controls and Markers antibody; Developmental Biology antibody; Gene Regulation antibody; Neuroscience antibody
Calculated Mw	30 kDa
PTM	GSK3B-mediated phosphorylation results in cytoplasmic localization and degradation.

Images



ARG55242 anti-Slug antibody ICC/IF image

Immunofluorescence: HepG2 cells stained with ARG55242 anti-Slug antibody (green). Actin filaments have been labeled with Alexa Fluor 555 phalloidin (red). DAPI (blue) for nuclear staining.

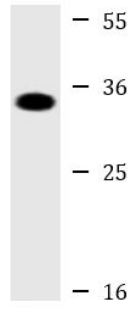


ARG55242 anti-Slug antibody IHC-P image

Immunohistochemistry: Formalin-fixed and paraffin-embedded Human Breast tissue stained with ARG55242 anti-Slug antibody.

ARG55242 anti-Slug antibody WB image

Western blot: 20 µg of Mouse heart lysate stained with ARG55242 anti-Slug antibody at 1:2000 dilution.



Mouse heart
