

## ARG55223 anti-CYC1 antibody

Package: 100 µl  
Store at: -20°C

### Summary

Product Description	Rabbit Polyclonal antibody recognizes CYC1
Tested Reactivity	Hu
Predict Reactivity	Ms
Tested Application	FACS, IHC-P, WB
Host	Rabbit
Clonality	Polyclonal
Isotype	IgG
Target Name	CYC1
Species	Human
Immunogen	KLH-conjugated synthetic peptide corresponding to aa. 259-287 (C-terminus) of Human CYC1.
Conjugation	Un-conjugated
Alternate Names	Cytochrome c1, heme protein, mitochondrial; UQCR4; Cytochrome b-c1 complex subunit 4; Complex III subunit 4; Complex III subunit IV; Cytochrome c-1; Ubiquinol-cytochrome-c reductase complex cytochrome c1 subunit; MC3DN6

### Application Instructions

Application table	Application	Dilution
	FACS	1:10 - 1:50
	IHC-P	Assay-dependent
	WB	1:1000
Application Note	* The dilutions indicate recommended starting dilutions and the optimal dilutions or concentrations should be determined by the scientist.	
Positive Control	HeLa	

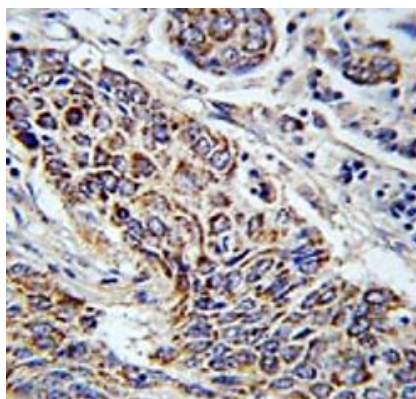
### Properties

Form	Liquid
Purification	Purification with Protein A and immunogen peptide.
Buffer	PBS and 0.09% (W/V) Sodium azide
Preservative	0.09% (W/V) Sodium azide
Storage instruction	For continuous use, store undiluted antibody at 2-8°C for up to a week. For long-term storage, aliquot and store at -20°C or below. Storage in frost free freezers is not recommended. Avoid repeated freeze/thaw cycles. Suggest spin the vial prior to opening. The antibody solution should be gently mixed before use.

## Bioinformation

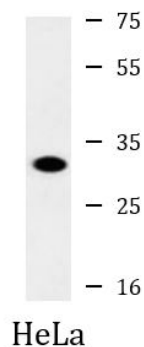
Database links	<a href="#">GeneID: 1537 Human</a> <a href="#">Swiss-port # P08574 Human</a>
Gene Symbol	CYC1
Gene Full Name	cytochrome c-1
Background	This gene encodes a subunit of the cytochrome bc1 complex, which plays an important role in the mitochondrial respiratory chain by transferring electrons from the Rieske iron-sulfur protein to cytochrome c. Mutations in this gene may cause mitochondrial complex III deficiency, nuclear type 6. [provided by RefSeq, Dec 2013]
Function	This is the heme-containing component of the cytochrome b-c1 complex, which accepts electrons from Rieske protein and transfers electrons to cytochrome c in the mitochondrial respiratory chain. [UniProt]
Research Area	Controls and Markers antibody; Metabolism antibody; Signaling Transduction antibody
Calculated Mw	35 kDa
PTM	Binds 1 heme group per subunit.
Cellular Localization	Mitochondrion inner membrane; Single-pass membrane protein; Intermembrane side

## Images



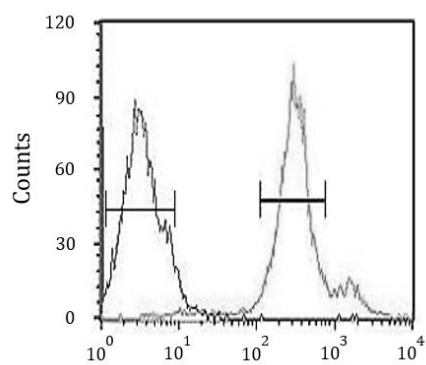
ARG55223 anti-CYC1 antibody IHC-P image

Immunohistochemistry: Formalin-fixed and paraffin-embedded Human lung carcinoma stained with ARG55223 anti-CYC1 antibody.



ARG55223 anti-CYC1 antibody WB image

Western blot: 35 µg of HeLa cell lysate stained with ARG55223 anti-CYC1 antibody.



#### ARG55223 anti-CYC1 antibody FACS image

Flow Cytometry: HeLa cells stained with ARG55223 anti-CYC1 antibody (right histogram) or without primary antibody control (left histogram), followed by incubation with FITC labelled secondary antibody.