

ARG55214 anti-CNDP1 antibody

Package: 100 µl
Store at: -20°C

Summary

| | |
|---------------------|--|
| Product Description | Rabbit Polyclonal antibody recognizes CNDP1 |
| Tested Reactivity | Hu, Ms, Rat |
| Tested Application | WB |
| Host | Rabbit |
| Clonality | Polyclonal |
| Isotype | IgG |
| Target Name | CNDP1 |
| Species | Human |
| Immunogen | KLH-conjugated synthetic peptide corresponding to aa. 128-142 (Center) of Human CNDP1. |
| Conjugation | Un-conjugated |
| Alternate Names | Carnosine dipeptidase 1; EC 3.4.13.20; CNDP dipeptidase 1; CN1; CPGL2; Serum carnosinase; Beta-Ala-His dipeptidase; HsT2308; Glutamate carboxypeptidase-like protein 2 |

Application Instructions

| | | |
|-------------------|--|----------|
| Application table | Application | Dilution |
| | WB | 1:1000 |
| Application Note | * The dilutions indicate recommended starting dilutions and the optimal dilutions or concentrations should be determined by the scientist. | |
| Positive Control | Mouse kidney | |

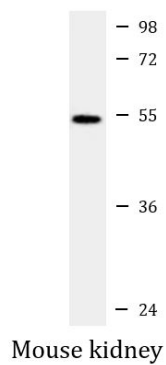
Properties

| | |
|---------------------|--|
| Form | Liquid |
| Purification | Purification with Protein A and immunogen peptide. |
| Buffer | PBS and 0.09% (W/V) Sodium azide |
| Preservative | 0.09% (W/V) Sodium azide |
| Storage instruction | For continuous use, store undiluted antibody at 2-8°C for up to a week. For long-term storage, aliquot and store at -20°C or below. Storage in frost free freezers is not recommended. Avoid repeated freeze/thaw cycles. Suggest spin the vial prior to opening. The antibody solution should be gently mixed before use. |
| Note | For laboratory research only, not for drug, diagnostic or other use. |

Bioinformation

| | |
|-----------------------|--|
| Gene Symbol | CNDP1 |
| Gene Full Name | carnosine dipeptidase 1 (metallopeptidase M20 family) |
| Background | This gene encodes a member of the M20 metalloprotease family. The encoded protein is specifically expressed in the brain, is a homodimeric dipeptidase which was identified as human carnosinase. This gene contains trinucleotide (CTG) repeat length polymorphism in the coding region. [provided by RefSeq, Jul 2008] |
| Research Area | Cancer antibody; Signaling Transduction antibody |
| Calculated Mw | 57 kDa |
| Cellular Localization | Secreted. |

Images



ARG55214 anti-CNDP1 antibody WB image

Western blot: 20 µg of Mouse kidney lysate stained with ARG55214 anti-CNDP1 antibody at 1:1000 dilution.