

ARG55189 anti-Beclin 1 antibody

Package: 100 µl
Store at: -20°C

Summary

Product Description	Rabbit Polyclonal antibody recognizes Beclin 1
Tested Reactivity	Hu, Ms, Rat
Tested Application	IHC-P, IP, WB
Host	Rabbit
Clonality	Polyclonal
Isotype	IgG
Target Name	Beclin 1
Species	Human
Immunogen	Recombinant protein of Human Beclin-1 (NP_003757.1)
Conjugation	Un-conjugated
Alternate Names	BECN1; Beclin 1; VPS30; ATG6; Coiled-Coil Myosin-Like BCL2-Interacting Protein; Beclin 1, Autophagy Related; Beclin-1; Beclin 1 (Coiled-Coil, Moesin-Like BCL2 Interacting Protein); Beclin 1 (Coiled-Coil, Moesin-Like BCL2-Interacting Protein); ATG6 Autophagy Related 6 Homolog (S. Cerevisiae); Testis Secretory Sperm-Binding Protein Li 215e; ATG6 Autophagy Related 6 Homolog; Beclin1-Gamma; Protein GT197; Beclin1-Beta; Beclin1; GT197

Application Instructions

Application table	Application	Dilution
	IHC-P	1:50 - 1:200
	IP	1:50 - 1:100
	WB	1:500 - 1:2000
Application Note	* The dilutions indicate recommended starting dilutions and the optimal dilutions or concentrations should be determined by the scientist.	
Positive Control	Mouse spleen and Raji	

Properties

Form	Liquid
Purification	Affinity purification with immunogen.
Buffer	PBS (pH 7.3), 0.02% Sodium azide and 50% Glycerol
Preservative	0.02% Sodium azide
Stabilizer	50% Glycerol
Storage instruction	For continuous use, store undiluted antibody at 2-8°C for up to a week. For long-term storage, aliquot and store at -20°C. Storage in frost free freezers is not recommended. Avoid repeated freeze/thaw

cycles. Suggest spin the vial prior to opening. The antibody solution should be gently mixed before use.

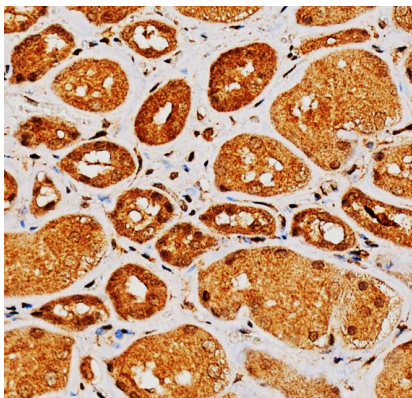
Note

For laboratory research only, not for drug, diagnostic or other use.

Bioinformation

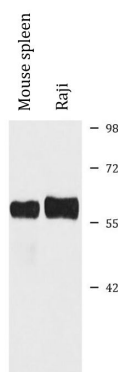
Gene Symbol	BECN1
Gene Full Name	beclin 1, autophagy related
Background	This gene encodes a protein that regulates autophagy, a catabolic process of degradation induced by starvation. The encoded protein is a component of the phosphatidylinositol-3-kinase (PI3K) complex which mediates vesicle-trafficking processes. This protein is thought to play a role in multiple cellular processes, including tumorigenesis, neurodegeneration and apoptosis. Alternative splicing results in multiple transcript variants. [provided by RefSeq, Sep 2015]
Function	Protects against infection by a neurovirulent strain of Sindbis virus. May play a role in antiviral host defense. [UniProt]
Highlight	Related products: Beclin 1 antibodies ; Beclin 1 Duos / Panels ;
Research Area	Cancer antibody; Cell Death antibody; Gene Regulation antibody; Metabolism antibody; Microbiology and Infectious Disease antibody; Autophagy Study antibody
Calculated Mw	52 kDa
PTM	Acetylation, Isopeptide bond, Phosphoprotein, Ubl conjugation. [UniProt]
Cellular Localization	Cytoplasm, Cytoplasmic vesicle, Endoplasmic reticulum, Endosome, Golgi apparatus, Membrane, Mitochondrion, Nucleus. [UniProt]

Images



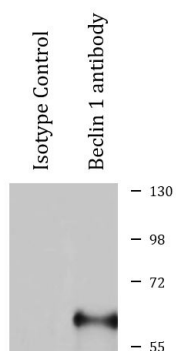
ARG55189 anti-Beclin 1 antibody IHC-P image

Immunohistochemistry: Human kidney stained with ARG55189 anti-Beclin 1 antibody at 1:300 dilution.



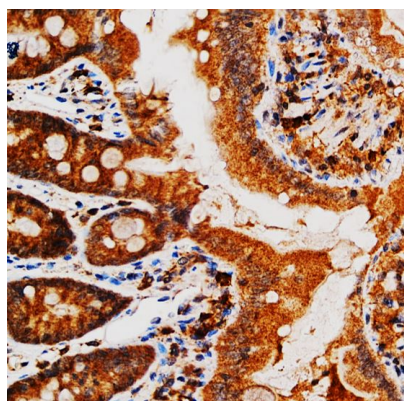
ARG55189 anti-Beclin 1 antibody WB image

Western blot: Mouse spleen and Raji cell lysates stained with ARG55189 anti-Beclin 1 antibody.



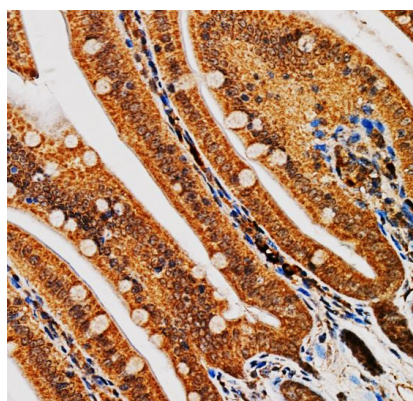
ARG55189 anti-Beclin 1 antibody IP image

Immunoprecipitation: 200 µg of HeLa cells immunoprecipitated and stained with ARG55189 anti-Beclin 1 antibody at 1:1000 dilution.



ARG55189 anti-Beclin 1 antibody IHC-P image

Immunohistochemistry: Rat colon tissue stained with ARG55189 anti-Beclin 1 antibody at 1:300 dilution.



ARG55189 anti-Beclin 1 antibody IHC-P image

Immunohistochemistry: Mouse intestine stained with ARG55189 anti-Beclin 1 antibody at 1:300 dilution.