

ARG55168
anti-ATG13 antibodyPackage: 100 µl
Store at: -20°C**Summary**

Product Description	Rabbit Polyclonal antibody recognizes ATG13
Tested Reactivity	Hu, Ms
Predict Reactivity	Bov
Tested Application	IHC-P, WB
Host	Rabbit
Clonality	Polyclonal
Isotype	IgG
Target Name	ATG13
Species	Human
Immunogen	KLH-conjugated synthetic peptide corresponding to aa. 1-30 (N-terminus) of Human ATG13.
Conjugation	Un-conjugated
Alternate Names	KIAA0652; Autophagy-related protein 13; PARATARG8

Application Instructions

Application table	Application	Dilution
	IHC-P	Assay-dependent
	WB	1:1000
Application Note	* The dilutions indicate recommended starting dilutions and the optimal dilutions or concentrations should be determined by the scientist.	
Positive Control	CEM	

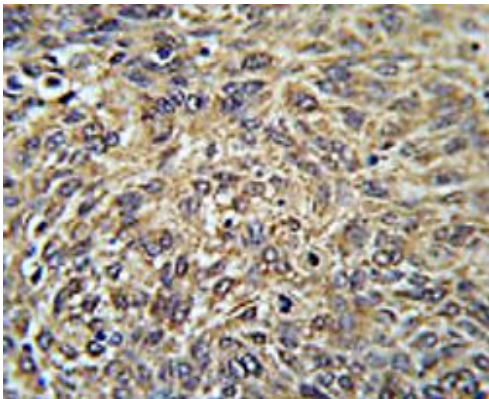
Properties

Form	Liquid
Purification	Purification with Protein A and immunogen peptide.
Buffer	PBS and 0.09% (W/V) Sodium azide
Preservative	0.09% (W/V) Sodium azide
Storage instruction	For continuous use, store undiluted antibody at 2-8°C for up to a week. For long-term storage, aliquot and store at -20°C or below. Storage in frost free freezers is not recommended. Avoid repeated freeze/thaw cycles. Suggest spin the vial prior to opening. The antibody solution should be gently mixed before use.
Note	For laboratory research only, not for drug, diagnostic or other use.

Bioinformation

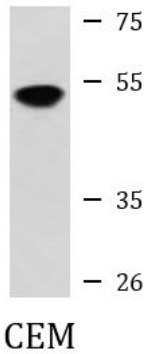
Database links	GeneID: 51897 Mouse GeneID: 9776 Human Swiss-port # O75143 Human Swiss-port # Q91YI1 Mouse
Gene Symbol	ATG13
Gene Full Name	autophagy related 13
Function	Autophagy factor required for autophagosome formation and mitophagy. Target of the TOR kinase signaling pathway that regulates autophagy through the control of the phosphorylation status of ATG13 and ULK1, and the regulation of the ATG13-ULK1-RB1CC1 complex. Through its regulation of ULK1 activity, plays a role in the regulation of the kinase activity of mTORC1 and cell proliferation. [UniProt]
Research Area	Cancer antibody; Cell Death antibody; Metabolism antibody
Calculated Mw	57 kDa
PTM	Phosphorylated by ULK1, ULK2 and mTOR. Phosphorylation status depends on nutrient-rich conditions; dephosphorylated during starvation or following treatment with rapamycin. ULK1-mediated phosphorylation of ATG13 at Ser-355 is required for efficient clearance of depolarized mitochondria.
Cellular Localization	Cytoplasm, cytosol. Preautophagosomal structure. Note=Under starvation conditions, is localized to punctate structures primarily representing the isolation membrane; the isolation membrane sequesters a portion of the cytoplasm resulting in autophagosome formation.

Images



ARG55168 anti-ATG13 antibody IHC-P image

Immunohistochemistry: Formalin-fixed and paraffin-embedded Human lung carcinoma stained with ARG55168 anti-ATG13 antibody.



ARG55168 anti-ATG13 antibody WB image

Western blot: 35 µg of CEM cell lysate stained with ARG55168 anti-ATG13 antibody.