

## ARG55143 anti-AMMECR1 antibody

Package: 100 µl  
Store at: -20°C

### Summary

Product Description	Rabbit Polyclonal antibody recognizes AMMECR1
Tested Reactivity	Hu
Predict Reactivity	Ms
Tested Application	WB
Host	Rabbit
Clonality	Polyclonal
Isotype	IgG
Target Name	AMMECR1
Species	Human
Immunogen	KLH-conjugated synthetic peptide corresponding to aa. 271-298 (C-terminus) of Human AMMECR1.
Conjugation	Un-conjugated
Alternate Names	AMMERC1; AMME syndrome candidate gene 1 protein

### Application Instructions

Application table	Application	Dilution
	WB	1:1000
Application Note	* The dilutions indicate recommended starting dilutions and the optimal dilutions or concentrations should be determined by the scientist.	
Positive Control	WiDr	

### Properties

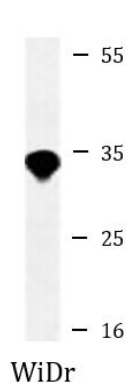
Form	Liquid
Purification	Purification with Protein A and immunogen peptide.
Buffer	PBS and 0.09% (W/V) Sodium azide
Preservative	0.09% (W/V) Sodium azide
Storage instruction	For continuous use, store undiluted antibody at 2-8°C for up to a week. For long-term storage, aliquot and store at -20°C or below. Storage in frost free freezers is not recommended. Avoid repeated freeze/thaw cycles. Suggest spin the vial prior to opening. The antibody solution should be gently mixed before use.
Note	For laboratory research only, not for drug, diagnostic or other use.

### Bioinformation

Database links	<a href="#">GeneID: 9949 Human</a> <a href="#">Swiss-port # Q9Y4X0 Human</a>
Gene Symbol	AMMECR1
Gene Full Name	Alport syndrome, mental retardation, midface hypoplasia and elliptocytosis chromosomal region gene 1
Background	<p>The exact function of this gene is not known, however, submicroscopic deletion of the X chromosome including this gene, COL4A5, and FACL4 genes, result in a contiguous gene deletion syndrome, the AMME complex (Alport syndrome, mental retardation, midface hypoplasia, and elliptocytosis). Alternatively spliced transcript variants encoding different isoforms have been found for this gene. [provided by RefSeq, Jan 2010]</p>
Research Area	Cell Biology and Cellular Response antibody
Calculated Mw	35 kDa

## Images

---



ARG55143 anti-AMMECR1 antibody WB image

Western blot: 35 µg of WiDr cell lysate stained with ARG55143 anti-AMMECR1 antibody.