

ARG55030 anti-CCL4 / MIP1 beta antibody

Package: 100 µl
Store at: -20°C

Summary

Product Description	Rabbit Polyclonal antibody recognizes CCL4 / MIP1 beta
Tested Reactivity	Hu, Ms
Tested Application	IHC-P, WB
Host	Rabbit
Clonality	Polyclonal
Isotype	IgG
Target Name	CCL4 / MIP1 beta
Species	Human
Immunogen	KLH-conjugated synthetic peptide corresponding to aa. 22-48 of Human CCL4.
Conjugation	Un-conjugated
Alternate Names	C-C motif chemokine 4; MIP-1-beta; Act-2; Protein H400; Small-inducible cytokine A4; ACT2; MIP-1B; Macrophage inflammatory protein 1-beta; Immune activation protein 2; SIS-gamma; ACT-2; Mip1b; Scya4; AT744.1

Application Instructions

Application table	Application	Dilution
	IHC-P	1:50 - 1:100
	WB	1:1000
Application Note	* The dilutions indicate recommended starting dilutions and the optimal dilutions or concentrations should be determined by the scientist.	
Positive Control	Mouse bladder	

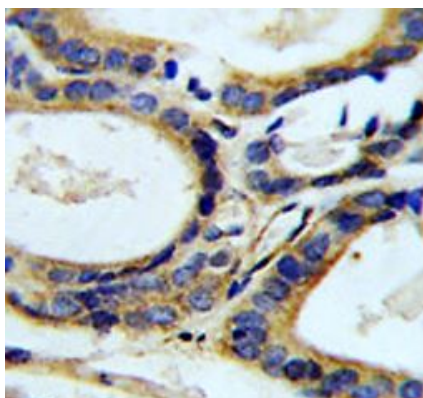
Properties

Form	Liquid
Purification	Purification with Protein A and immunogen peptide.
Buffer	PBS and 0.09% (W/V) Sodium azide
Preservative	0.09% (W/V) Sodium azide
Storage instruction	For continuous use, store undiluted antibody at 2-8°C for up to a week. For long-term storage, aliquot and store at -20°C or below. Storage in frost free freezers is not recommended. Avoid repeated freeze/thaw cycles. Suggest spin the vial prior to opening. The antibody solution should be gently mixed before use.
Note	For laboratory research only, not for drug, diagnostic or other use.

Bioinformation

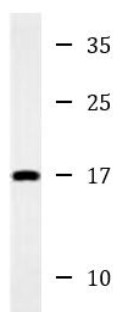
Database links	GeneID: 20303 Mouse GeneID: 6351 Human Swiss-port # P13236 Human Swiss-port # P14097 Mouse
Gene Symbol	CCL4
Gene Full Name	chemokine (C-C motif) ligand 4
Background	The protein encoded by this gene is a mitogen-inducible monokine and is one of the major HIV-suppressive factors produced by CD8+ T-cells. The encoded protein is secreted and has chemokinetic and inflammatory functions. [provided by RefSeq, Dec 2012]
Function	Monokine with inflammatory and chemokinetic properties. Binds to CCR5. One of the major HIV-suppressive factors produced by CD8+ T-cells. Recombinant MIP-1-beta induces a dose-dependent inhibition of different strains of HIV-1, HIV-2, and simian immunodeficiency virus (SIV). The processed form MIP-1-beta(3-69) retains the abilities to induce down-modulation of surface expression of the chemokine receptor CCR5 and to inhibit the CCR5-mediated entry of HIV-1 in T-cells. MIP-1-beta(3-69) is also a ligand for CCR1 and CCR2 isoform B. [UniProt]
Research Area	Immune System antibody
Calculated Mw	10 kDa

Images



ARG55030 anti-CCL4 / MIP1 beta antibody IHC-P image

Immunohistochemistry: Formalin-fixed and paraffin-embedded Human prostate carcinoma stained with ARG55030 anti-CCL4 / MIP1 beta antibody.



Mouse bladder

ARG55030 anti-CCL4 / MIP1 beta antibody WB image

Western blot: 15 µg of Mouse bladder lysate stained with ARG55030 anti-CCL4 / MIP1 beta antibody.