

ARG55029
anti-ZNF366 antibodyPackage: 100 µl
Store at: -20°C

Summary

Product Description	Rabbit Polyclonal antibody recognizes ZNF366
Tested Reactivity	Hu
Tested Application	WB
Host	Rabbit
Clonality	Polyclonal
Isotype	IgG
Target Name	ZNF366
Species	Human
Immunogen	KLH-conjugated synthetic peptide corresponding to aa. 650-678 (C-terminus) of Human ZNF366.
Conjugation	Un-conjugated
Alternate Names	Zinc finger protein 366; DCSCRIPT

Application Instructions

Application table	Application	Dilution
	WB	1:1000
Application Note	* The dilutions indicate recommended starting dilutions and the optimal dilutions or concentrations should be determined by the scientist.	
Positive Control	K562	

Properties

Form	Liquid
Purification	Purification with Protein A and immunogen peptide.
Buffer	PBS and 0.09% (W/V) Sodium azide
Preservative	0.09% (W/V) Sodium azide
Storage instruction	For continuous use, store undiluted antibody at 2-8°C for up to a week. For long-term storage, aliquot and store at -20°C or below. Storage in frost free freezers is not recommended. Avoid repeated freeze/thaw cycles. Suggest spin the vial prior to opening. The antibody solution should be gently mixed before use.
Note	For laboratory research only, not for drug, diagnostic or other use.

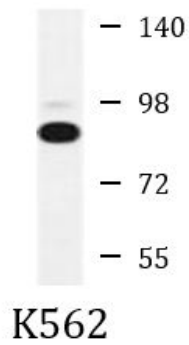
Bioinformation

Database links	GeneID: 167465 Human
----------------	--------------------------------------

[Swiss-port # Q8N895 Human](#)

Gene Symbol	ZNF366
Gene Full Name	zinc finger protein 366
Function	Has transcriptional repression activity. Acts as corepressor of ESR1; the function seems to involve CTBP1 and histone deacetylases. [UniProt]
Research Area	Gene Regulation antibody; Signaling Transduction antibody
Calculated Mw	85 kDa
Cellular Localization	Nucleus.

Images



ARG55029 anti-ZNF366 antibody WB image

Western blot: 35 µg of K562 cell lysate stained with ARG55029 anti-ZNF366 antibody.