

ARG54900 anti-Enolase 1 antibody

Package: 100 µl, 50 µl
Store at: -20°C

Summary

Product Description	Rabbit Polyclonal antibody recognizes Enolase 1
Tested Reactivity	Hu, Ms, Rat
Tested Application	ICC/IF, IHC-P, WB
Host	Rabbit
Clonality	Polyclonal
Isotype	IgG
Target Name	Enolase 1
Species	Human
Immunogen	Recombinant protein of Human Enolase1 (NP_001188412.1)
Conjugation	Un-conjugated
Alternate Names	MPB1; Plasminogen-binding protein; Alpha-enolase; MBP-1; NNE; PPH; Enolase 1; ENO1L1; Phosphopyruvate hydratase; 2-phospho-D-glycerate hydro-lyase; C-myc promoter-binding protein; Non-neural enolase; MPB-1; EC 4.2.1.11

Application Instructions

Application table	Application	Dilution
	ICC/IF	1:20 - 1:100
	IHC-P	1:20 - 1:100
	WB	1:500 - 1:2000
Application Note	* The dilutions indicate recommended starting dilutions and the optimal dilutions or concentrations should be determined by the scientist.	

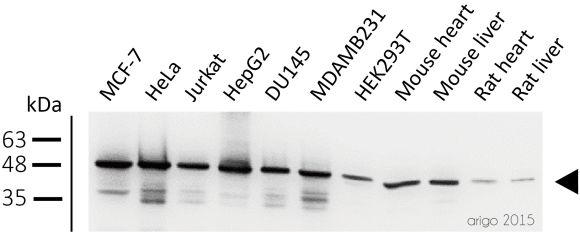
Properties

Form	Liquid
Purification	Affinity purification with immunogen.
Buffer	PBS (pH 7.3), 0.02% Sodium azide and 50% Glycerol
Preservative	0.02% Sodium azide
Stabilizer	50% Glycerol
Storage instruction	For continuous use, store undiluted antibody at 2-8°C for up to a week. For long-term storage, aliquot and store at -20°C. Storage in frost free freezers is not recommended. Avoid repeated freeze/thaw cycles. Suggest spin the vial prior to opening. The antibody solution should be gently mixed before use.
Note	For laboratory research only, not for drug, diagnostic or other use.

Bioinformation

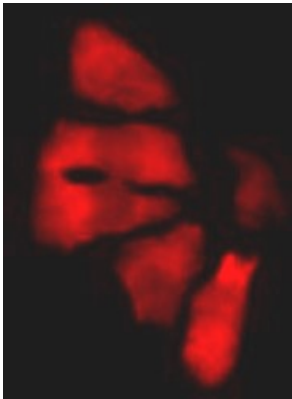
Gene Symbol	ENO1
Gene Full Name	enolase 1, (alpha)
Background	This gene encodes alpha-enolase, one of three enolase isoenzymes found in mammals. Each isoenzyme is a homodimer composed of 2 alpha, 2 gamma, or 2 beta subunits, and functions as a glycolytic enzyme. Alpha-enolase in addition, functions as a structural lens protein (tau-crystallin) in the monomeric form. Alternative splicing of this gene results in a shorter isoform that has been shown to bind to the c-myc promoter and function as a tumor suppressor. Several pseudogenes have been identified, including one on the long arm of chromosome 1. Alpha-enolase has also been identified as an autoantigen in Hashimoto encephalopathy. [provided by RefSeq, Jan 2011]
Function	Multifunctional enzyme that, as well as its role in glycolysis, plays a part in various processes such as growth control, hypoxia tolerance and allergic responses. May also function in the intravascular and pericellular fibrinolytic system due to its ability to serve as a receptor and activator of plasminogen on the cell surface of several cell-types such as leukocytes and neurons. Stimulates immunoglobulin production. MBP1 binds to the myc promoter and acts as a transcriptional repressor. May be a tumor suppressor. [UniProt]
Research Area	Cancer antibody; Gene Regulation antibody; Metabolism antibody; Signaling Transduction antibody
Calculated Mw	47 kDa
PTM	ISGylated.

Images



ARG54900 anti-Enolase 1 antibody WB image

Western blot: 30 µg of MCF-7, HeLa, Jurkat, HepG2, DU145, MDAMB231, HEK293T, Mouse heart, Mouse liver, Rat heart, and Rat liver lysates stained with ARG54900 anti-Enolase 1 antibody at 1:500 dilution.



ARG54900 anti-Enolase 1 antibody ICC/IF image

Immunofluorescence: HeLa cells stained with ARG54900 anti-Enolase 1 antibody.