

## ARG54437 anti-EndoG antibody

Package: 50 µg

Store at: -20°C

### Summary

Product Description	Rabbit Polyclonal antibody recognizes EndoG
Tested Reactivity	Hu, Ms, Rat
Tested Application	ICC/IF, IHC-P, WB
Specificity	This antibody recognizes human, mouse, and rat EndoG (Endonuclease G) an enzyme that is activated by apoptotic stimuli and is able to induce nucleosomal fragmentation of DNA independently of caspase and DFF/CAD. EndoG is a mitochondria-specific nuclease that translocates to the nucleus and cleaves chromatin DNA during apoptosis.
Host	Rabbit
Clonality	Polyclonal
Isotype	IgG
Target Name	EndoG
Species	Human
Immunogen	Peptide corresponding to aa 55-70 of human EndoG (accession no. NP_004426).
Conjugation	Un-conjugated
Alternate Names	EC 3.1.30.-; Endo G; Endonuclease G, mitochondrial

### Application Instructions

Application table	Application	Dilution
	ICC/IF	Assay-dependent
	IHC-P	Assay-dependent
	WB	1 - 2 µg/ml
Application Note	* The dilutions indicate recommended starting dilutions and the optimal dilutions or concentrations should be determined by the scientist.	
Positive Control	3T3, HepG2 and Human pancreas	

### Properties

Form	Liquid
Purification	Immunoaffinity chroma-tography
Buffer	PBS (pH 7.4) and 0.02% Sodium azide
Preservative	0.02% Sodium azide
Storage instruction	For continuous use, store undiluted antibody at 2-8°C for up to a week. For long-term storage, aliquot and store at -20°C or below. Storage in frost free freezers is not recommended. Avoid repeated freeze/thaw cycles. Suggest spin the vial prior to opening. The antibody solution should be gently mixed

before use.

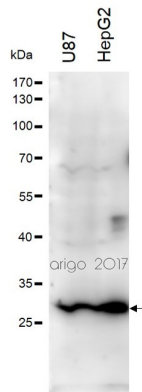
**Note**

For laboratory research only, not for drug, diagnostic or other use.

## Bioinformation

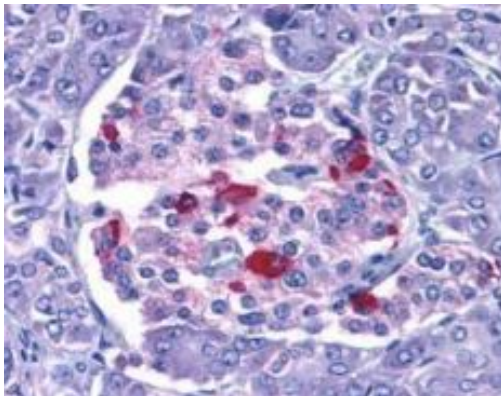
Gene Symbol	ENDOG
Gene Full Name	endonuclease G
Background	The protein encoded by this gene is a nuclear encoded endonuclease that is localized in the mitochondrion. The encoded protein is widely distributed among animals and cleaves DNA at GC tracts. This protein is capable of generating the RNA primers required by DNA polymerase gamma to initiate replication of mitochondrial DNA. [provided by RefSeq, Jul 2008]
Function	Cleaves DNA at double-stranded (DG)n.(DC)n and at single-stranded (DC)n tracts. In addition to deoxyribonuclease activities, also has ribonuclease (RNase) and RNase H activities. Capable of generating the RNA primers required by DNA polymerase gamma to initiate replication of mitochondrial DNA (By similarity). [UniProt]
Research Area	Cancer antibody; Cell Biology and Cellular Response antibody; Cell Death antibody; Gene Regulation antibody; Metabolism antibody
Calculated Mw	33 kDa

## Images



ARG54437 anti-EndoG antibody WB image

Western blot: 30 µg of U87 and HepG2 cell lysates stained with ARG54437 anti-EndoG antibody at 1:500 dilution.



ARG54437 anti-EndoG antibody IHC image

Immunohistochemistry: human pancreas stained with ARG54437 anti-EndoG antibody at 15 µg/ml dilution.