

## ARG54332 anti-APAF1 antibody

Package: 50 µg  
Store at: -20°C

### Summary

Product Description	Rabbit Polyclonal antibody recognizes APAF1
Tested Reactivity	Hu, Ms, Rat
Tested Application	IHC-P, WB
Specificity	This antibody recognizes human, mouse, and rat Apaf1 (130kDa).
Host	Rabbit
Clonality	Polyclonal
Isotype	IgG
Target Name	APAF1
Species	Human
Immunogen	Peptide corresponding to aa 1158-1177 of human Apaf1. This sequence differs from that of mouse Apaf1 by one amino acid.
Conjugation	Un-conjugated
Alternate Names	CED4; APAF-1; Apoptotic protease-activating factor 1

### Application Instructions

Application table	Application	Dilution
	IHC-P	20 µg/mL
	WB	1 µg/mL
Application Note	* The dilutions indicate recommended starting dilutions and the optimal dilutions or concentrations should be determined by the scientist.	
Positive Control	Human heart and skin	

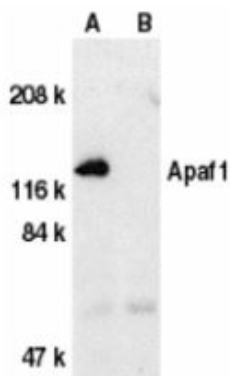
### Properties

Form	Liquid
Purification	Immunoaffinity chroma-tography
Buffer	PBS (pH 7.4) and 0.02% Sodium azide
Preservative	0.02% Sodium azide
Storage instruction	For continuous use, store undiluted antibody at 2-8°C for up to a week. For long-term storage, aliquot and store at -20°C or below. Storage in frost free freezers is not recommended. Avoid repeated freeze/thaw cycles. Suggest spin the vial prior to opening. The antibody solution should be gently mixed before use.
Note	For laboratory research only, not for drug, diagnostic or other use.

## Bioinformation

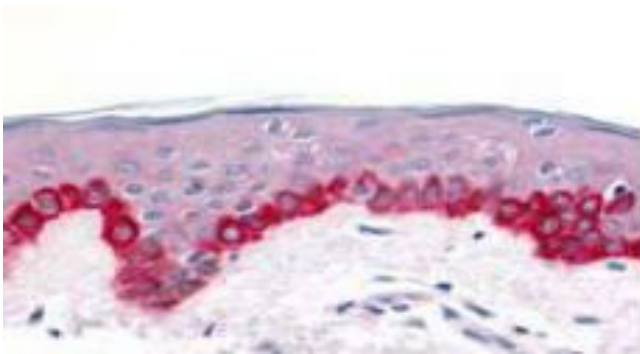
Gene Symbol	APAF1
Gene Full Name	apoptotic peptidase activating factor 1
Background	The mammalian homologues of the key cell death gene CED-4 in <i>C. elegans</i> has been identified recently from human and mouse and designated Apaf1 (for apoptosis protease-activating factor 1). Apaf1 binds to cytochrome c (Apaf2) and caspase-9 (Apaf3), which leads to caspase-9 activation. Activated caspase-9 in turn cleaves and activates caspase-3, one of the key proteases responsible for the proteolytic cleavage of many key proteins in apoptosis. Apaf1 can also associate with caspase-4 and caspase-8. Apaf1 is ubiquitously expressed in human tissues.
Function	Oligomeric Apaf-1 mediates the cytochrome c-dependent autocatalytic activation of pro-caspase-9 (Apaf-3), leading to the activation of caspase-3 and apoptosis. This activation requires ATP. Isoform 6 is less effective in inducing apoptosis. [UniProt]
Research Area	Cancer antibody; Cell Biology and Cellular Response antibody; Cell Death antibody; Metabolism antibody
Calculated Mw	142 kDa

## Images



ARG54332 anti-APAF1 antibody WB image

Western Blot: human heart tissue lysate in the absence (A) or presence (B) of blocking peptide. stained with ARG54332 anti-APAF1 antibody at 1 µg/ml dilution.



ARG54332 anti-APAF1 antibody IHC-P image

Immunohistochemistry: human skin tissue stained with ARG54332 anti-APAF1 antibody at 20 µg/ml dilution.