

ARG54303 anti-CD300e antibody [UP-H2] (APC)

Package: 50 tests
Store at: 4°C

Summary

Product Description	APC-conjugated Mouse Monoclonal antibody [UP-H2] recognizes CD300e
Tested Reactivity	Hu
Tested Application	FACS
Specificity	The clone UP-H2 recognizes CD300e / IREM-2, a 32 kDa glycoprotein expressed by mature monocytes and peripheral blood myeloid dendritic cells.
Host	Mouse
Clonality	Monoclonal
Clone	UP-H2
Isotype	IgG1
Target Name	CD300e
Immunogen	CD300e-HA-transfected cells
Conjugation	APC
Alternate Names	Poly-Ig receptor 2; Immune receptor expressed on myeloid cells 2; IREM-2; CD300LE; CMRF35-A5; CD antigen CD300e; CLM2; IREM2; CMRF35-like molecule 2; PlgR2; CLM-2; Polymeric immunoglobulin receptor 2; PlgR-2; CD300 antigen-like family member E

Application Instructions

Application table	Application	Dilution
	FACS	10 µl / 10 ⁶ cells
Application Note	* The dilutions indicate recommended starting dilutions and the optimal dilutions or concentrations should be determined by the scientist.	

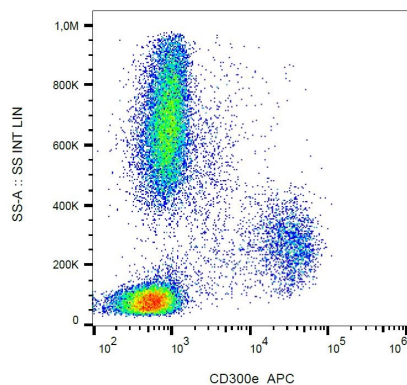
Properties

Form	Liquid
Purification Note	The purified antibody is conjugated with cross-linked Allophycocyanin (APC) under optimum conditions. The conjugate is purified by size-exclusion chromatography and adjusted for direct use. No reconstitution is necessary.
Buffer	PBS, 15 mM Sodium azide and 0.2% (w/v) high-grade protease free BSA
Preservative	15 mM Sodium azide
Stabilizer	0.2% (w/v) high-grade protease free BSA
Storage instruction	Aliquot and store in the dark at 2-8°C. Keep protected from prolonged exposure to light. Avoid repeated freeze/thaw cycles. Suggest spin the vial prior to opening. The antibody solution should be gently mixed before use.
Note	For laboratory research only, not for drug, diagnostic or other use.

Bioinformation

Database links	GeneID: 342510 Human Swiss-port # Q496F6 Human
Gene Symbol	CD300E
Gene Full Name	CD300e molecule
Background	CD300e / IREM-2 (immune receptor expressed by myeloid cells 2), also known as CLM2 or LMIR6, is a monomeric transmembrane glycoprotein with a single extracellular immunoglobulin-like domain. Intracellularly it associates with DAP-12, an ITAM-containing adaptor molecule. CD300e is expressed on mature monocytes and peripheral blood myeloid dendritic cells. Its crosslinking leads to release of pro-inflammatory cytokines, and increased expression of activation markers.
Function	Probably acts as an activating receptor. [UniProt]
Research Area	Immune System antibody
Calculated Mw	23 kDa
PTM	N-glycosylated.

Images



ARG54303 anti-CD300e antibody [UP-H2] (APC) FACS image

Flow Cytometry: Human peripheral blood stained with ARG54303 anti-CD300e antibody [UP-H2] (APC).