

ARG54242 anti-CD35 / CR1 antibody [E11] (PE)

Package: 50 tests
Store at: 4°C

Summary

Product Description	PE-conjugated Mouse Monoclonal antibody [E11] recognizes CD35 / CR1
Tested Reactivity	Hu, Bb, Chimp, R. Mk
Tested Application	ELISA, FACS, IHC-Fr, IHC-P, WB
Host	Mouse
Clonality	Monoclonal
Clone	E11
Isotype	IgG1, kappa
Target Name	CD35 / CR1
Species	Human
Immunogen	Acute monocytic leukemia cells and normal blood monocytes
Conjugation	PE
Alternate Names	C3b/C4b receptor; C4BR; CD antigen CD35; KN; CD35; C3BR; Complement receptor type 1

Application Instructions

Application table	Application	Dilution
	ELISA	Assay-dependent
	FACS	10 µl/10 ⁶ cells
	IHC-Fr	Assay-dependent
	IHC-P	Assay-dependent
	WB	Assay-dependent
Application Note	* The dilutions indicate recommended starting dilutions and the optimal dilutions or concentrations should be determined by the scientist.	

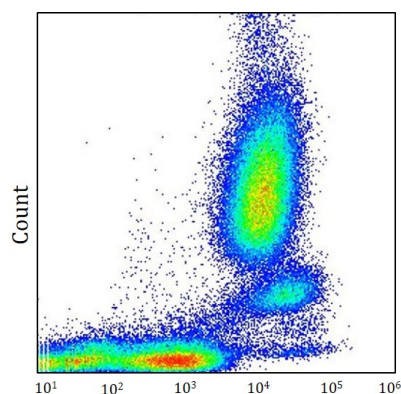
Properties

Form	Liquid
Buffer	PBS, 0.1% Sodium azide and Sucrose.
Preservative	0.1% Sodium azide
Stabilizer	Sucrose
Storage instruction	Aliquot and store in the dark at 2-8°C. Keep protected from prolonged exposure to light. Avoid repeated freeze/thaw cycles. Suggest spin the vial prior to opening. The antibody solution should be gently mixed before use.

Bioinformation

Database links	GeneID: 1378 Human Swiss-port # P17927 Human
Gene Symbol	CR1
Gene Full Name	complement component (3b/4b) receptor 1 (Knops blood group)
Background	CD35 (complement receptor 1, CR1) is a monomeric multiple modular cell surface glycoprotein which serves as receptor for C3b and C4b, the most important components of the complement system leading to clearance of foreign macromolecules. It is expressed mainly on the surface of granulocytes, monocytes, erythrocytes, B cells and follicular dendritic cells. Besides its role in complement cascade, CD35 is involved in blocking BCR-induced proliferation and the differentiation of B cells to plasmablasts and their Ig production.
Function	Mediates cellular binding of particles and immune complexes that have activated complement. [UniProt]
Research Area	Developmental Biology antibody; Immune System antibody
Calculated Mw	224 kDa

Images



ARG54242 anti-CD35 / CR1 antibody [E11] (PE) FACS image

Flow Cytometry: Human peripheral whole blood stained with ARG54242 anti-CD35 / CR1 antibody [E11] (PE) at 0.56 µg/ml dilution.