

ARG54229 anti-5-bromodeoxyuridine / BrdU antibody [Bu20a] (PE)

Package: 50 tests
Store at: 4°C

Summary

Product Description	PE-conjugated Mouse Monoclonal antibody [Bu20a] recognizes 5-bromodeoxyuridine / BrdU
Tested Reactivity	Other
Tested Application	FACS
Specificity	The clone Bu20a reacts specifically with BrdU incorporated into DNA during S-phase of a cell cycle. It is useful for detecting proliferating cells by flow cytometry or immunohistochemistry staining.
Host	Mouse
Clonality	Monoclonal
Clone	Bu20a
Isotype	IgG1
Target Name	5-bromodeoxyuridine / BrdU
Immunogen	Bromodeoxyuridine conjugated to BSA
Conjugation	PE

Application Instructions

Application table	Application	Dilution
	FACS	10 µl / 10 ⁶ cells
Application Note	* The dilutions indicate recommended starting dilutions and the optimal dilutions or concentrations should be determined by the scientist.	

Properties

Form	Liquid
Purification Note	The purified antibody is conjugated with R-Phycoerythrin (PE) under optimum conditions. The conjugate is purified by size-exclusion chromatography and adjusted for direct use. No reconstitution is necessary.
Buffer	PBS, 15 mM Sodium azide and 0.2% (w/v) high-grade protease free BSA
Preservative	15 mM Sodium azide
Stabilizer	0.2% (w/v) high-grade protease free BSA
Storage instruction	Aliquot and store in the dark at 2-8°C. Keep protected from prolonged exposure to light. Avoid repeated freeze/thaw cycles. Suggest spin the vial prior to opening. The antibody solution should be gently mixed before use.
Note	For laboratory research only, not for drug, diagnostic or other use.

Bioinformation

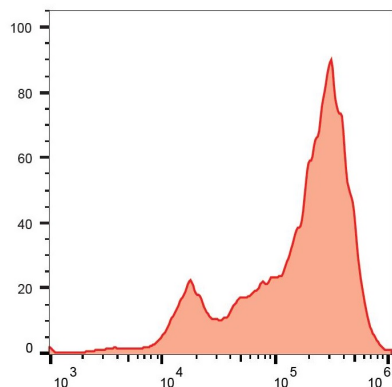
Background

Bromodeoxyuridine (BrdU) is a thymidine analog which is selectively incorporated into the DNA of proliferating cells to provide a marker for the DNA being replicated. The number of proliferating cells can then be detected in cell lysates, tissue sections or suspensions using an antibody specific for the BrdU.

Research Area

Cell Biology and Cellular Response antibody; Controls and Markers antibody; Gene Regulation antibody; Neuroscience antibody

Images



ARG54229 anti-5-bromodeoxyuridine / BrdU antibody [Bu20a] (PE)
FACS image

Flow Cytometry: BrdU incorporated into the K562 cells. Cells were stained with ARG54229 anti-5-bromodeoxyuridine / BrdU antibody [Bu20a] (PE).