

ARG54207 anti-CD90 / Thy 1 antibody [5E10] (APC)

Package: 50 tests
Store at: 4°C

Summary

Product Description	APC-conjugated Mouse Monoclonal antibody [5E10] recognizes CD90 / Thy 1
Tested Reactivity	Hu, Dog, NHuPrm, Pig
Tested Application	FACS
Specificity	The clone 5E10 recognizes CD90/Thy-1, a GPI-anchored cell surface glycoprotein expressed predominantly on thymocytes, hematopoietic stem cells and neurons.
Host	Mouse
Clonality	Monoclonal
Clone	5E10
Isotype	IgG1
Target Name	CD90 / Thy 1
Immunogen	HEL erythroleukemia cells.
Conjugation	APC
Alternate Names	Thy-1 membrane glycoprotein; Thy-1 antigen; CD antigen CD90; CDw90; CD90

Application Instructions

Application table	Application	Dilution
	FACS	10 µl / 10 ⁶ cells
Application Note	* The dilutions indicate recommended starting dilutions and the optimal dilutions or concentrations should be determined by the scientist.	

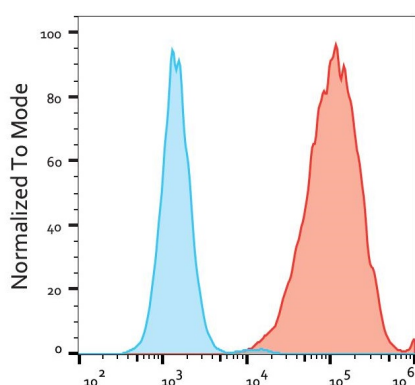
Properties

Form	Liquid
Purification Note	The purified antibody is conjugated with cross-linked Allophycocyanin (APC) under optimum conditions. The conjugate is purified by size-exclusion chromatography and adjusted for direct use. No reconstitution is necessary.
Buffer	PBS, 15 mM Sodium azide and 0.2% (w/v) high-grade protease free BSA
Preservative	15 mM Sodium azide
Stabilizer	0.2% (w/v) high-grade protease free BSA
Storage instruction	Aliquot and store in the dark at 2-8°C. Keep protected from prolonged exposure to light. Avoid repeated freeze/thaw cycles. Suggest spin the vial prior to opening. The antibody solution should be gently mixed before use.
Note	For laboratory research only, not for drug, diagnostic or other use.

Bioinformation

Database links	GeneID: 7070 Human Swiss-port # P04216 Human
Gene Symbol	THY1
Gene Full Name	Thy-1 cell surface antigen
Background	CD90 (Thy-1) is an 18-35 kDa GPI-anchored plasma membrane glycoprotein expressed in many cell types, such as in hematopoietic cells and neurons, connective tissues, various fibroblast and stromal cell lines, tumor endothelial cell lines and other. It is involved in T cell activation, cellular adhesion, proliferation and migration, neurite outgrowth, wound healing, apoptosis, and fibrosis. CD90 participates in multiple signaling cascades and its effects are tissue- and cell type-specific. It often functions as an important regulator of cell-cell and cell-matrix interactions.
Function	May play a role in cell-cell or cell-ligand interactions during synaptogenesis and other events in the brain. [UniProt]
Research Area	Developmental Biology antibody; Immune System antibody; Neuroscience antibody
Calculated Mw	18 kDa

Images



ARG54207 anti-CD90 / Thy 1 antibody [5E10] (APC) FACS image

Flow Cytometry: Separation of Jurkat cells (red) from SP2 cells (blue). Cells were stained with ARG54207 anti-CD90 / Thy 1 antibody [5E10] (APC).