

ARG54138 anti-Prominin 1 antibody

Package: 100 µl, 50 µl
Store at: -20°C

Summary

Product Description	Mouse Monoclonal antibody recognizes Prominin 1
Tested Reactivity	Hu
Tested Application	FACS, ICC/IF, IHC-P, WB
Host	Mouse
Clonality	Monoclonal
Isotype	IgG2a
Target Name	Prominin 1
Species	Human
Immunogen	Purified recombinant human Prominin-1 protein fragments expressed in E.coli.
Conjugation	Un-conjugated
Alternate Names	CORD12; CD133; RP41; Antigen AC133; MCDR2; CD antigen CD133; PROML1; AC133; Prominin-like protein 1; Prominin-1; MSTP061; STGD4

Application Instructions

Application table	Application	Dilution
	FACS	1:100-1:200
	ICC/IF	1:100-1:200
	IHC-P	Assay-dependent
	WB	1:1000
Application Note	* The dilutions indicate recommended starting dilutions and the optimal dilutions or concentrations should be determined by the scientist.	

Properties

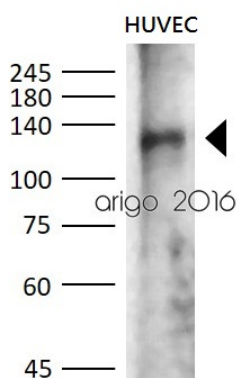
Form	Liquid
Purification	Affinity purified
Buffer	PBS (pH 7.4), 0.02% Sodium azide, 0.1mg/ml BSA and 50% Glycerol
Preservative	0.02% Sodium azide
Stabilizer	0.1mg/ml BSA, 50% Glycerol
Concentration	0.4 mg/ml
Storage instruction	For continuous use, store undiluted antibody at 2-8°C for up to a week. For long-term storage, aliquot and store at -20°C. Storage in frost free freezers is not recommended. Avoid repeated freeze/thaw cycles. Suggest spin the vial prior to opening. The antibody solution should be gently mixed before use.

Note For laboratory research only, not for drug, diagnostic or other use.

Bioinformation

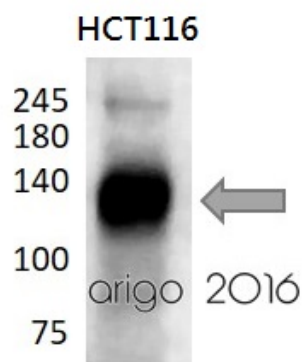
Database links	GeneID: 8842 Human Swiss-port # O43490 Human
Gene Symbol	PROM1
Background	Binds cholesterol in cholesterol-containing plasma membrane microdomains. Proposed to play a role in apical plasma membrane organization of epithelial cells. During early retinal development acts as a key regulator of disk morphogenesis. Involved in regulation of MAPK and Akt signaling pathways. In neuroblastoma cells suppresses cell differentiation such as neurite outgrowth in a RET-dependent manner.
Highlight	Related products: Prominin1 antibodies ; Anti-Mouse IgG secondary antibodies ; Related news: Stem cell and the regenerative medicine: Ready for the patients
Research Area	Cancer antibody; Cell Death antibody; Gene Regulation antibody
Calculated Mw	97 kDa
PTM	Isoform 1 and isoform 2 are glycosylated. Acetylation at Lys-225, Lys-257 and Lys-264 by NAT8 and NAT8B may control PROM1 protein expression and its function in cell apoptosis.
Cellular Localization	Cell projection > cilium > photoreceptor outer segment. Isoform 1: Apical cell membrane; Multi-pass membrane protein By similarity. Cell projection > microvillus membrane; Multi-pass membrane protein.

Images



ARG54138 anti-Prominin 1 antibody WB image

Western blot: 30 µg of HUVEC cell lysate stained with ARG54138 anti-Prominin 1 antibody at 1:1000 dilution.



ARG54138 anti-Prominin 1 antibody WB image

Western blot: 30 µg of HCT116 cell lysate stained with ARG54138 anti-Prominin 1 antibody at 1:1000 dilution.